
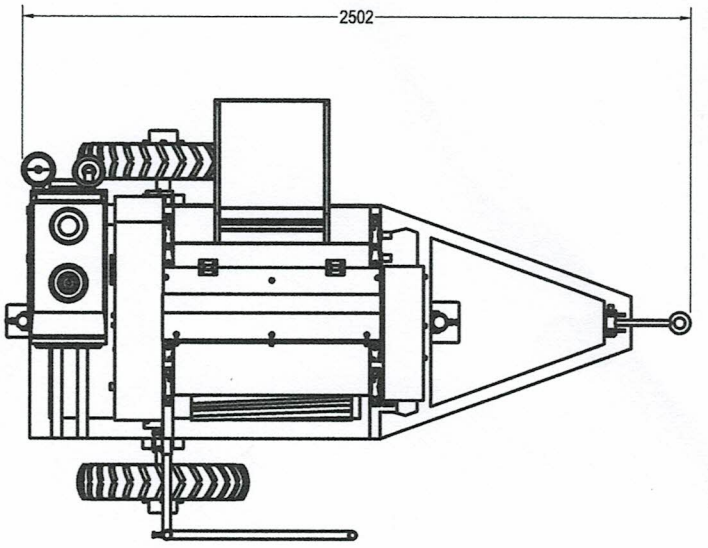
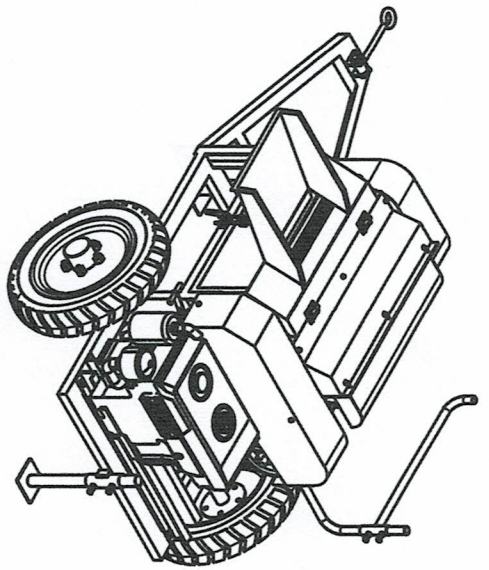


PERSPECTIVE VIEW

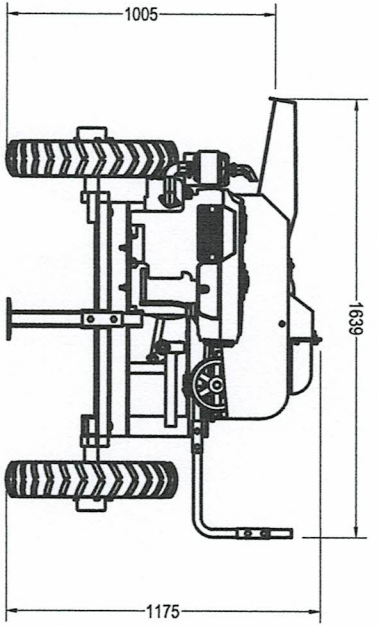
 <p>OWNER PHILIPPINE FIBER INDUSTRY DEVELOPMENT AUTHORITY 3F DANCE ALDS, DEPARTMENT OF AGRICULTURE ELLIPTICAL ROAD, DILIMAN, QUEZON CITY</p>	<p>PROJECT TITLE DESIGN AND DEVELOPMENT OF JUTE DECORTICATING MACHINE</p>	<p>SHEET CONTENTS</p> <table border="1"> <tr><td>AS SHOWN</td></tr> <tr><td> </td></tr> <tr><td> </td></tr> <tr><td> </td></tr> <tr><td> </td></tr> <tr><td> </td></tr> <tr><td> </td></tr> <tr><td> </td></tr> </table>	AS SHOWN								<p>DRAWN & DESIGNED BY: PERITO M. SORIANO JR. ARCHITECTURAL & MECHANICAL ENGINEER REG. NO. 009984 DATE: 07/13/2022</p>	<p>CHECKED BY: RAMIL B. BARCELONA ENGINEER</p>	<p>RECOMMENDING APPROVAL: REMEDIOSA V. ARBORE PHD CHIEF, FIBER UTILIZATION AND TECHNOLOGY DIVISION</p>	<p>APPROVED: KENNEDY T. CASTALES DEPUTY DIRECTOR III</p>	<p>SHEET NO. 1 22</p>
AS SHOWN															



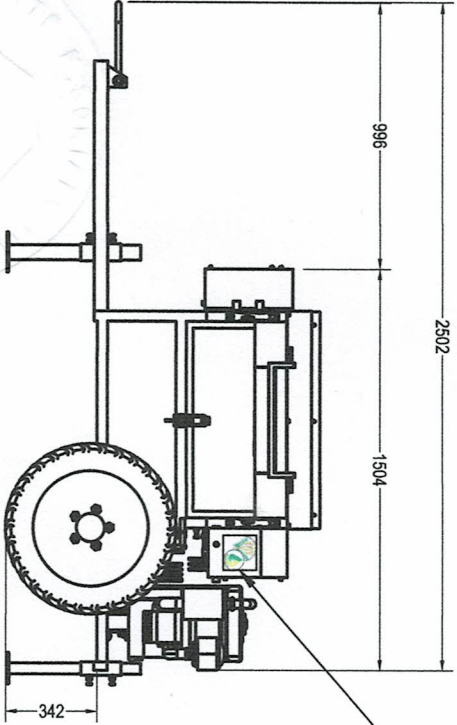
TOP VIEW



ISOMETRIC VIEW



FRONT VIEW

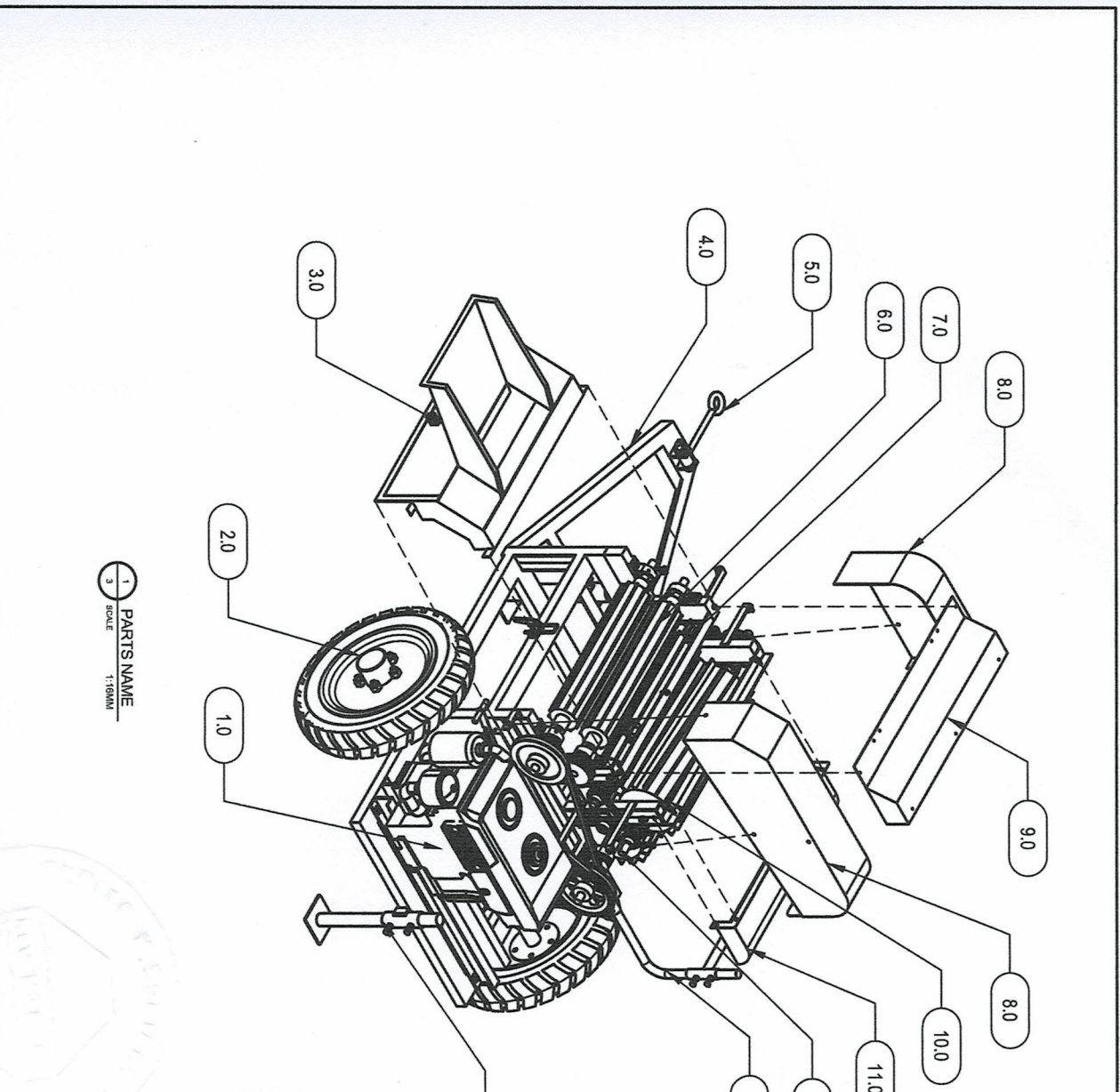


SIDE VIEW

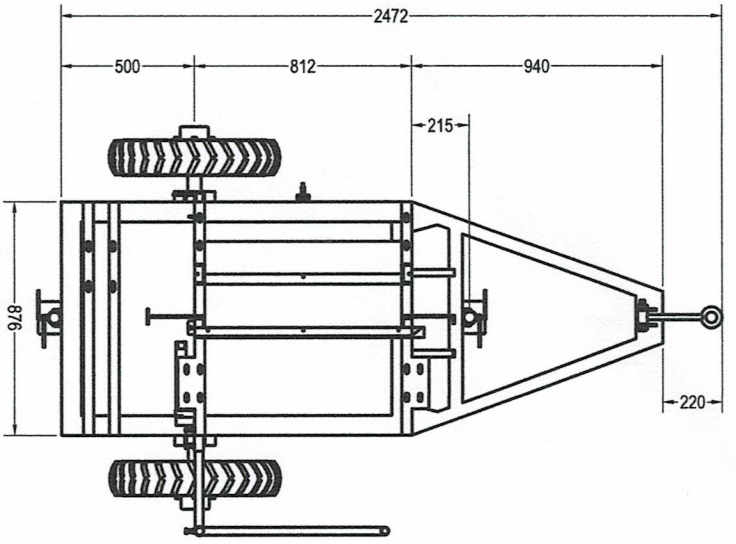
1
2
SCALE 1:20MM

PhilFIDA logo,
150mm X150mm,
Vinyl sticker

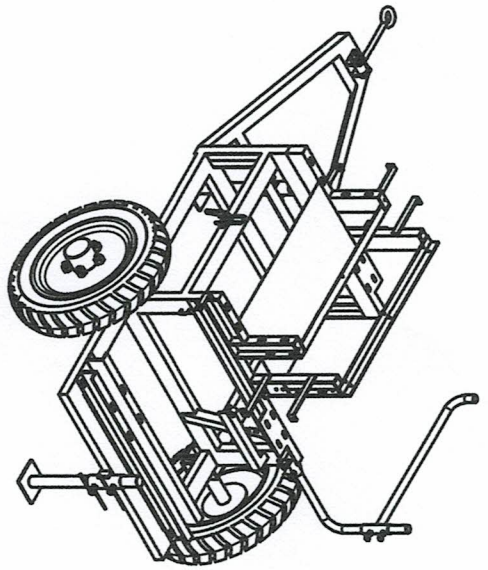
<p>OWNER PHILIPPINE FIBER INDUSTRY DEVELOPMENT AUTHORITY 3RD FLOOR BLDG. DEPARTMENT OF AGRICULTURE ELAPORAN ROAD, DAVAO CITY</p>	<p>PROJECT TITLE DESIGN AND DEVELOPMENT OF JUTE DECORTICATING MACHINE</p>	<p>SHEET CONTENTS ORTHOGONAL VIEWS</p>	<p>DRAWN & DESIGNED BY: PEPTON M. SORIANO III AGRICULTURAL AND MECHANICAL ENGINEER</p>	<p>CHECKED BY: RAMIL B. BARGELONA ENGINEER III</p>	<p>RECOMMENDING APPROVAL REMEDIOS, ABIGON, FND CHIEF, FIBER UTILIZATION AND TECHNOLOGY DIVISION</p>	<p>APPROVED EMERSON O. STALES EXECUTIVE SPECTOR III</p>	<p>SHEET NO. 2 22</p>
--	---	--	--	--	---	---	-------------------------------



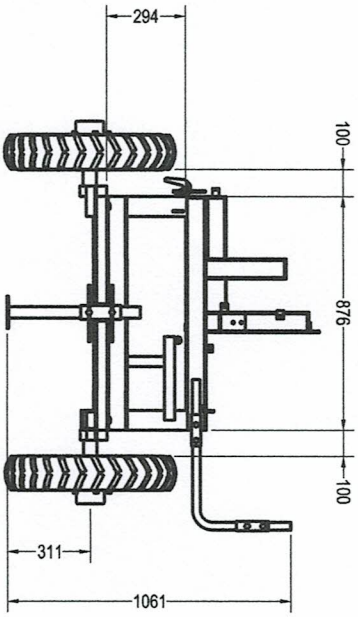
NO.	PARTS / ITEMS	DESCRIPTIONS	QTY.	MATERIALS	REMARKS
1.0	Prime mover	Diesel engine, 10hp, Horizontal Water cooling, Hand cranking start,	1 set	Standard	-
2.0	Wheel tire assy.	L7145R12 (wheel, rim & spindle axle)	2 sets	Standard	-
3.0	Infeed hopper	see details	1 set	mild steel	-
4.0	Machine frame assembly	see details	1 set	mild steel	-
5.0	Towing bar	see details	1 set	mild steel	-
6.0	Breaker drum assembly	see details	2 sets	Various	-
7.0	Feed roller assembly	see details	1 set	Various	-
8.0	Transmission covers	see details	2 sets	mild steel	-
9.0	Feed roller cover	see details	1 set	mild steel	-
10.0	Beater drum assembly	see details	2 sets	Various	-
11.0	Beater drum guard	see details	1 set	mild steel	-
12.0	Fiber line rod	see details	1 set	mild steel	-
13.0	Transmission assembly	see details	1 set	Standard	-
14.0	Parking stand	see details	2 sets	mild steel	-



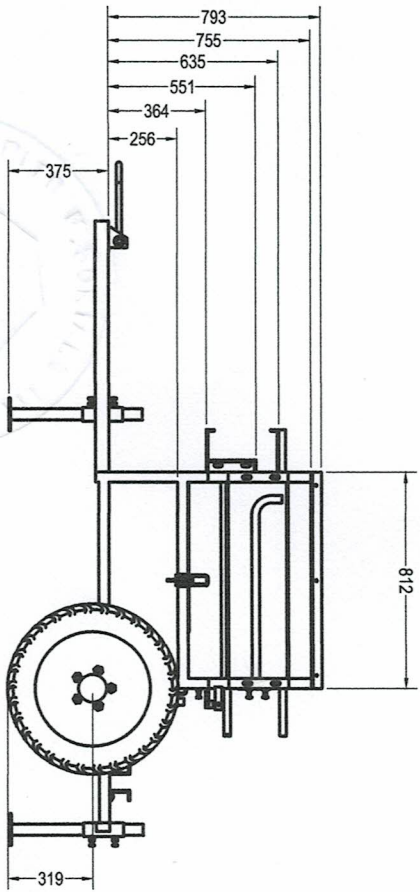
1 TOP VIEW
SCALE 1:200MM



2 ISOMETRIC VIEW
SCALE 1:200MM

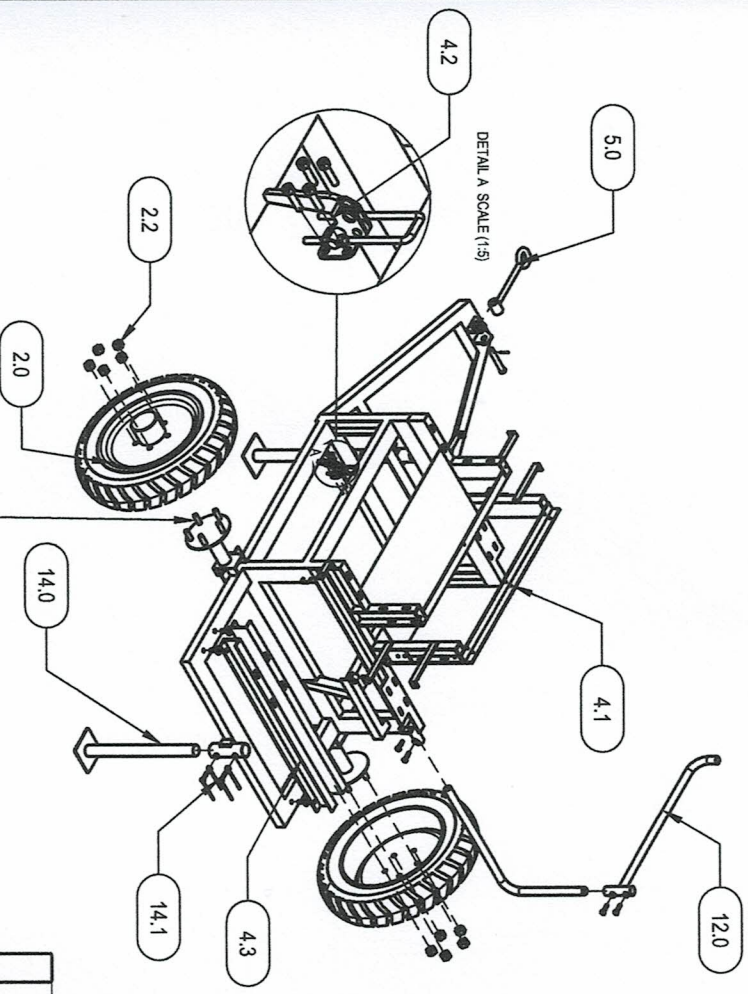


3 FRONT VIEW
SCALE 1:200MM



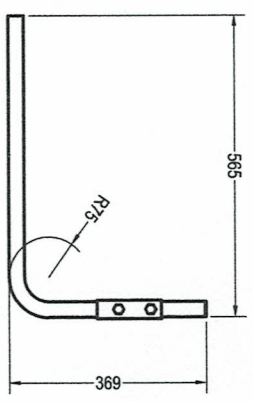
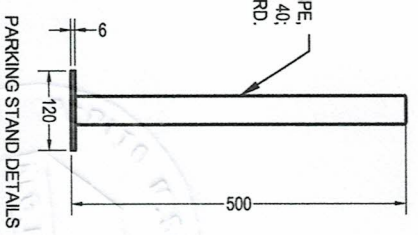
4 SIDE VIEW
SCALE 1:200MM

<p>PHILIPPINE FIBER INDUSTRY DEVELOPMENT AUTHORITY 387 DAPDAP ROAD, DEPARTMENT OF AGRICULTURE ELIPITICA ROAD, DILIMAN, QUEZON CITY</p>	OWNER	<p>DESIGN AND DEVELOPMENT OF JUTE DECORTICATING MACHINE</p>	PROJECT TITLE
	<p>PERITO M. SORIANO, III AGRICULTURAL AND INDUSTRIAL ENGINEER III</p>		DRAWN & DESIGNED BY:
<p>RAUL B. BARCELONA ENGINEER III</p>	CHECKED BY:	<p>REMEDIOS V. ARSON, PHD CHIEF, PRESIDENTIAL ATTACHE AND TECHNICAL DIVISION</p>	RECOMMENDING APPROVAL
<p>REMEDIOS V. ARSON, PHD PRESIDENTIAL ATTACHE AND TECHNICAL DIVISION</p>	APPROVED	<p>REMEDIOS V. ARSON, PHD PRESIDENTIAL ATTACHE AND TECHNICAL DIVISION</p>	APPROVAL
<p>DATE: 07/12/2022</p>	DATE	<p>4</p>	SHEET NO.
<p>22</p>	DATE	<p>4</p>	SHEET NO.

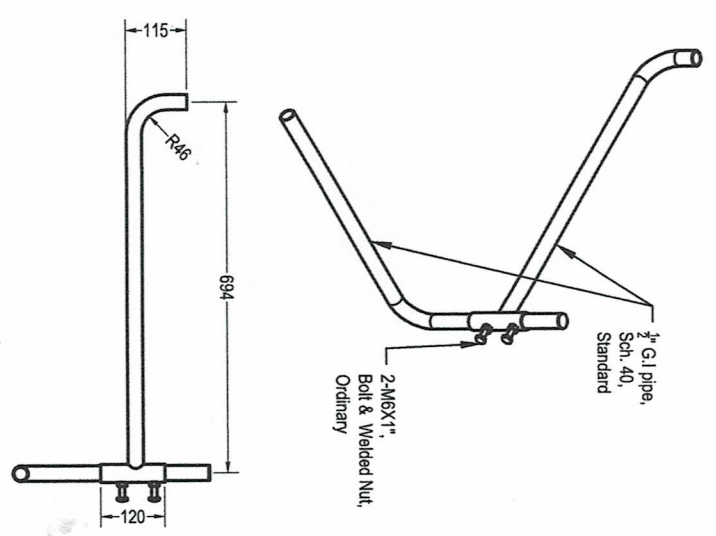


- Notes:
1. Full weld all joints;
 2. All dimensions are in mm, unless otherwise specified;
 3. Subject to actual verifications;

1 FRAME ASSY. PARTS NAME
SCALE 1:100MM

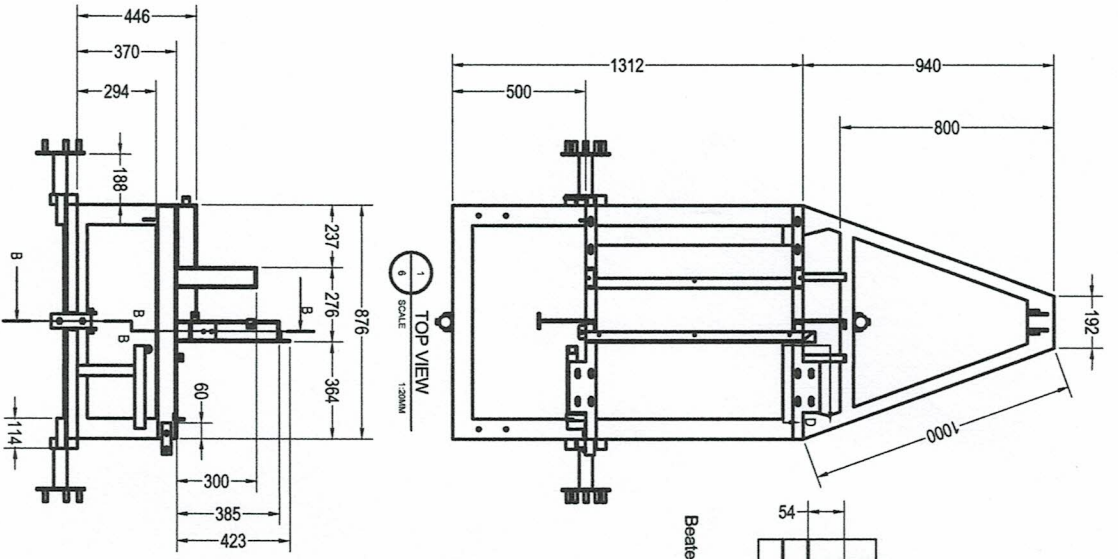


2 Fiberline Rod Details
SCALE 1:100MM



NO.	PARTS / ITEMS	DESCRIPTIONS	QTY.	MATERIALS	REMARKS
2.0	Wheel fire	L1745R12	2 sets	Standard	-
2.1	Wheel axle	Automotive rear axle, surplus	2 sets	Standard	-
2.2	Lug nut	Automotive lug nut, surplus	10 pcs	Standard	-
4.1	Main frame	see details	1 set	mild steel	-
4.2	Latch clamp	heavy duty, standard size	1 set	Standard	-
4.3	Engine base	see details	1 set	mild steel	-
5.0	Towing bar	see details	1 set	mild steel	-
12.0	Fiber line rod assy.	see details	1 set	mild steel	-
14.0	Parking stand	see details	2 sets	Various	-
14.1	Bolts and Nut	M10X1", Standard	2 sets	Standard	-

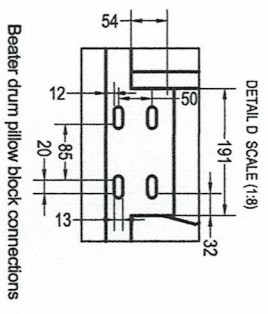
<p>PHILIPPINE FIBER INDUSTRY DEVELOPMENT AUTHORITY 38F DARPAO RDG, DEPARTMENT OF AGRICULTURE ELIPTICAL ROAD, DUBAUN, QUEZON CITY</p>	PROJECT TITLE	DESIGN AND DEVELOPMENT OF JUTE DECORTICATING MACHINE	<p>DRAWN & DESIGNED BY: PERITO M. BORGIANO, III AGRICULTURAL AND MECHANICAL ENGINEER</p> <p>CHECKED BY: RAMIL B. BARCELONA ENGINEER III</p> <p>RECOMMENDING APPROVAL: REMEDIOS YABCON CHIEF ENGINEER (MATERIALS) AND TECHNICIAN DIVISION</p> <p>APPROVED: KENNEDY COSTALES EXECUTIVE DIRECTOR III</p>	SHEET NO. 5
	SHEET CONTENTS	AS SHOWN		



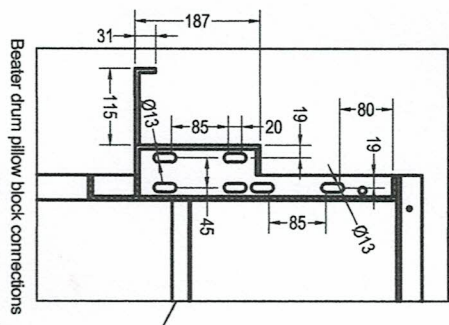
1 TOP VIEW
SCALE 1:20MM

Notes:
 1. Full weld all joints;
 2. All dimensions are in mm, unless otherwise specified;
 3. Subject to actual verifications;

2 FRONT VIEW
SCALE 1:20MM

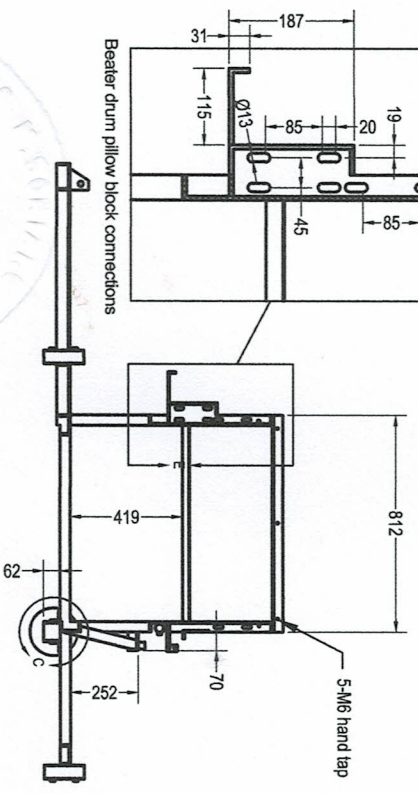
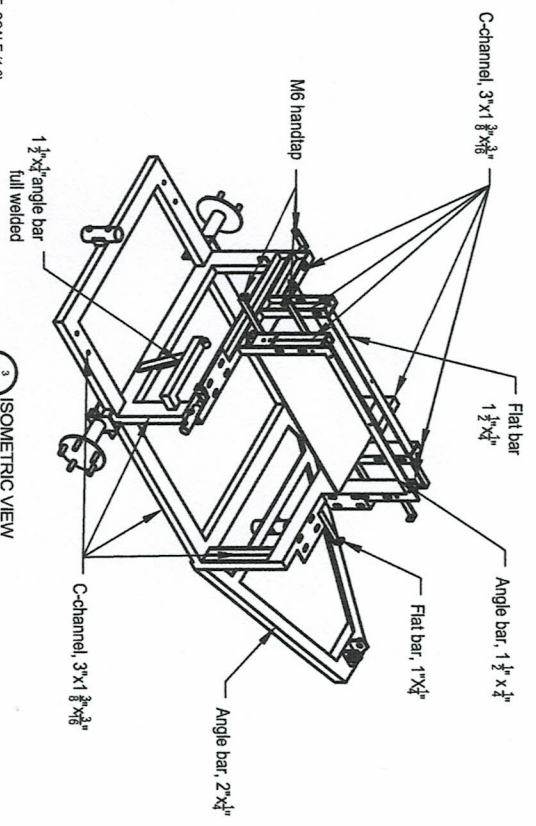


DETAIL D SCALE (1:8)

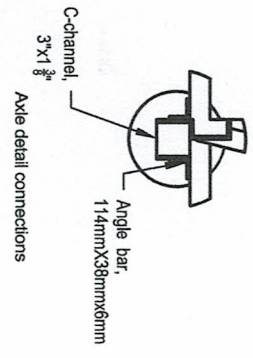


Beater drum pillow block connections

3 ISOMETRIC VIEW
SCALE 1:20MM



SECTION B-B (1:20)



DETAIL C SCALE (1:10)

OWNER
 PHILIPPINE FIBER INDUSTRY
 DEVELOPMENT AUTHORITY
 3/F DA-ACRIF BLDG., DEPARTMENT OF AGRICULTURE
 ELLIPTICAL ROAD, DILIMAN, QUEZON CITY

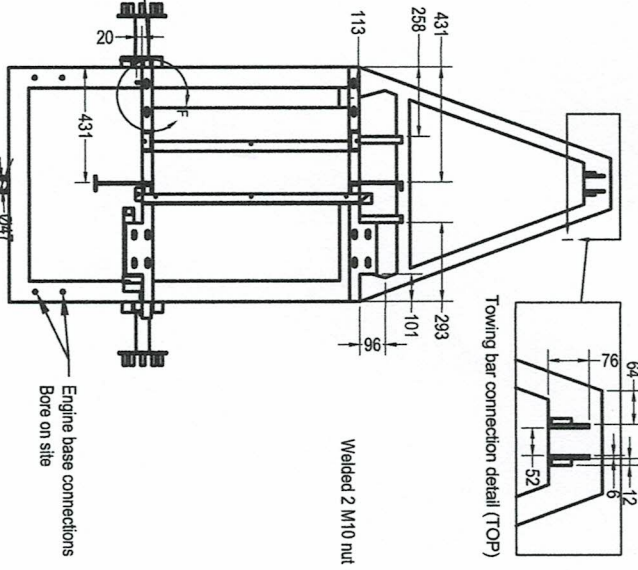
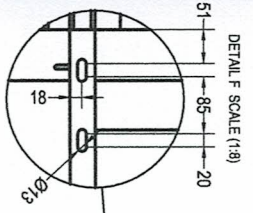
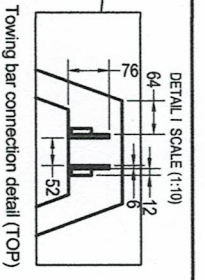
PROJECT TITLE
 DESIGN AND DEVELOPMENT OF
 JUTE DECORATING MACHINE

SHEET CONTENTS
 MAIN FRAME DETAILS
 DRAWN & DESIGNED BY: PERRO M. SORIANO
 AGRICULTURAL AND INDUSTRIAL DESIGNER
 PRC: 000064
 DATE: 07/13/2022

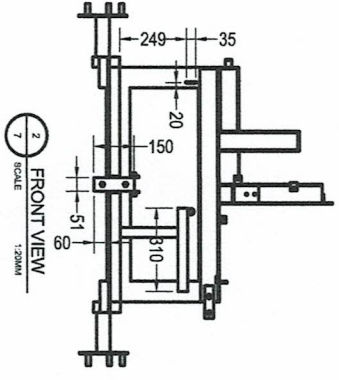
CHECKED BY: RAMIL B. BARCELONA
 ENGINEER III

RECOMMENDING APPROVAL
 REYNOLDO V. ARCONA, PhD
 CHIEF, FIBER UTILIZATION AND TECHNOLOGY DIVISION

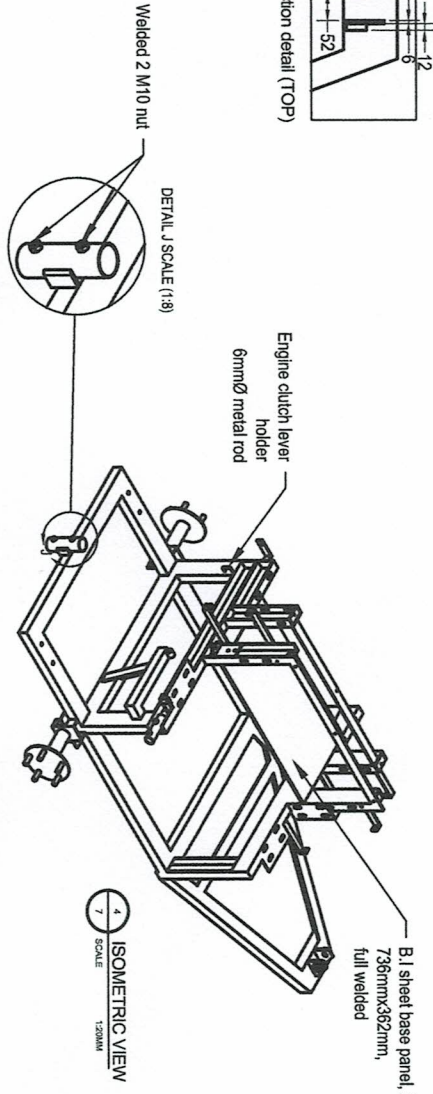
APPROVED
 KENNEDY B. BARRALES
 DEPARTMENT MANAGER



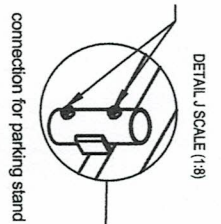
1 TOP VIEW
SCALE 1:20MM



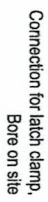
2 FRONT VIEW
SCALE 1:20MM



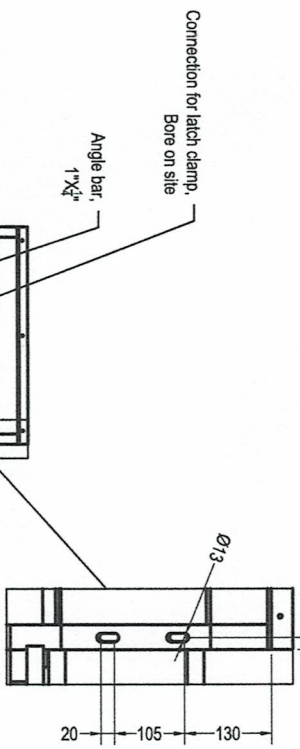
4 ISOMETRIC VIEW
SCALE 1:20MM



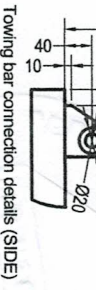
DETAIL J SCALE (1:8)



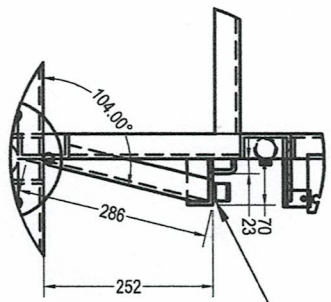
DETAIL H SCALE (1:8)



3 SIDE VIEW
SCALE 1:20MM



Towing bar connection details (SIDE)

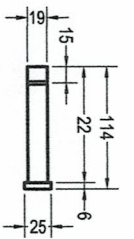


DETAIL K SCALE (1:8)

Welded bushing
OD = 25mm
ID = 16mm
L = 26mm

- Notes:
1. Full weld all joints;
 2. All dimensions are in mm, unless otherwise specified;
 3. Subject to actual verifications;

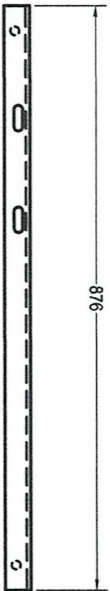
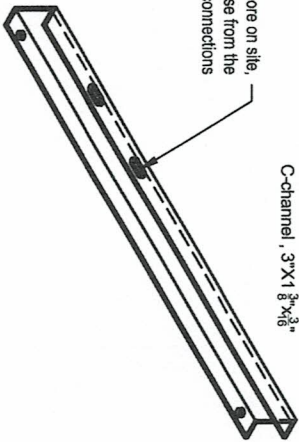
<p>PHILIPPINE FIBER INDUSTRY DEVELOPMENT AUTHORITY 39F DAVAOU ROAD, DEPARTMENT OF AGRICULTURE ELIPTICAL ROAD, DILIMAN, QUEZON CITY</p>	PROJECT TITLE	DESIGN AND DEVELOPMENT OF JUTE DECORATING MACHINE
	SHEET CONTENTS	AS SHOWN
<p>PERITO A. GONZALEZ AGRICULTURAL ENGINEER AND INDUSTRIAL DESIGNER</p>	DRAWN & DESIGNED BY:	PERITO A. GONZALEZ
	CHECKED BY:	RAMIL B. BARCELONA ENGINEER III
<p>REMEDIOS V. ASCENCION, PHD CHIEF, FIBER DESIGN AND TECHNOLOGY DIVISION</p>	RECOMMENDING APPROVAL:	REMEDIOS V. ASCENCION, PHD
	APPROVED:	KENNEDY A. OSTALES REGISTERED ENGINEER III
OWNER	SHEET NO.	7 22



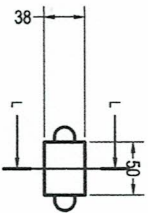
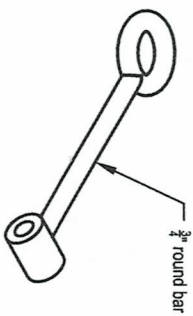
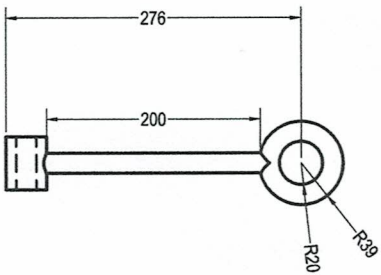
TOWING PIN

Materials:
C-channel, 3"x1 3/8"x3/8"

Bore on site,
base from the
engine connections



1 ENGINE BASE DETAILS
SCALE 1:5MM

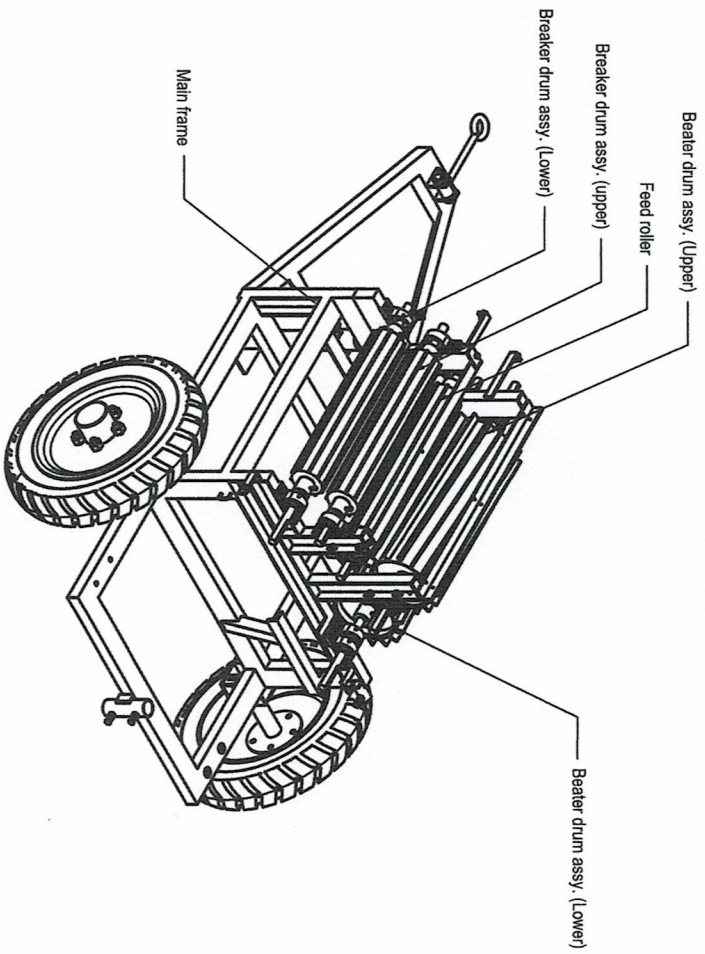


SECTION L-L (1:5)

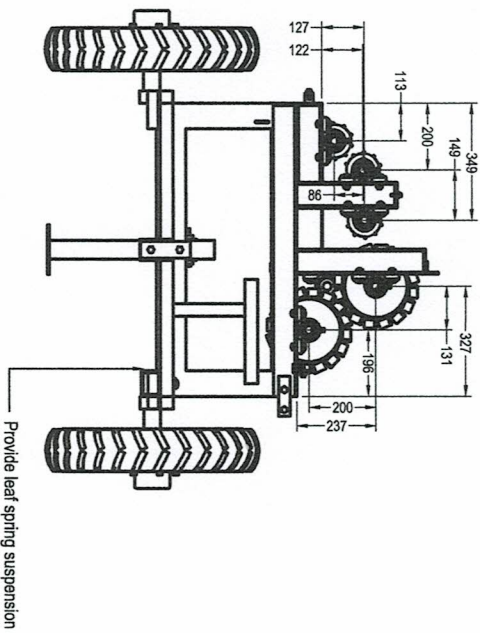
2 TOWING BAR
SCALE 1:5MM

- Notes:
1. Full weld all joints;
 2. All dimensions are in mm, unless otherwise specified;
 3. Subject to actual verifications;

<p>PHILIPPINE FIBER INDUSTRY DEVELOPMENT AUTHORITY 38F DAPAC BLDG. DEPARTMENT OF AGRICULTURE ELIPTICAL ROAD, DILIMAN, QUEZON CITY</p>	PROJECT TITLE	DESIGN AND DEVELOPMENT OF JUTE DECORTICATING MACHINE
	SHEET CONTENTS	AS SHOWN
OWNER	DRAWN & DESIGNED BY:	PERIOM N. SORIANO AGRICULTURAL AND MECHANICAL ENGINEER III
	CHECKED BY:	RAMIL B. BARCELONA ENGINEER III
	RECOMMENDING APPROVAL:	REYNOLDOS ARBOREDO CHIEF, FIBER UTILIZATION AND TECHNOLOGY DIVISION
	APPROVED:	KEYNEEDY DE VERA EXECUTIVE DIRECTOR III
	DATE	07/15/2022
	PROJECT NO.	8
	SHEET NO.	22



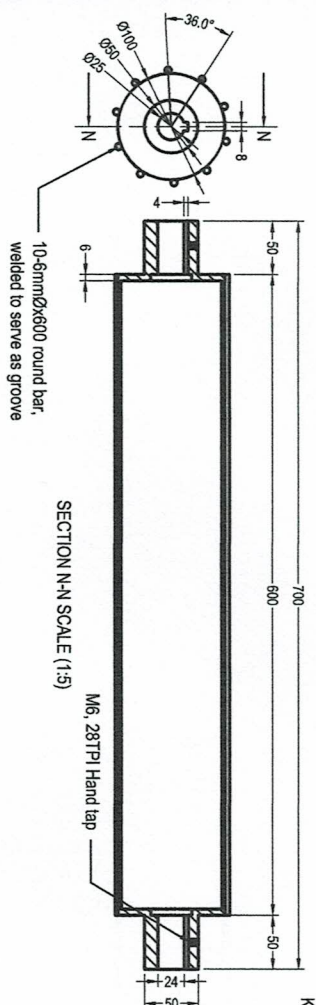
1 ISOMETRIC VIEW
SCALE 1:1.68MM



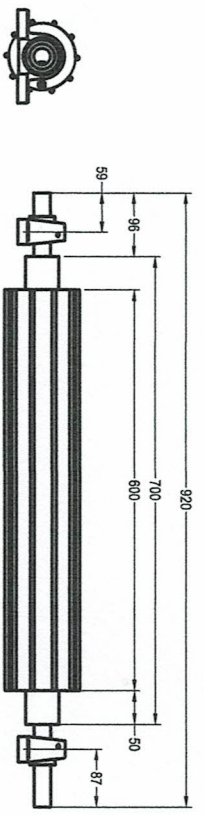
2 SIDE VIEW
SCALE 1:1.68MM

- GENERAL NOTES:
1. Full weld all joints;
 2. The rotating drum must be dynamically balance to avoid high vibration;
 3. All dimension are in millimeters, unless otherwise specified;
 4. Subject to actual verification;

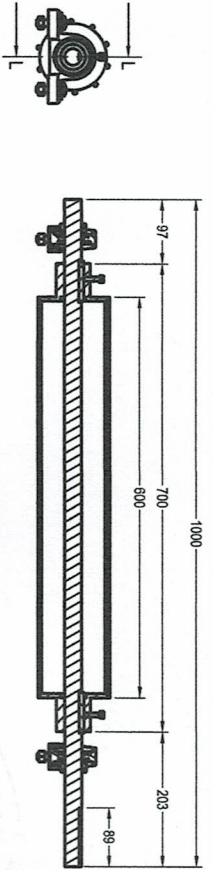
 PHILIPPINE FIBER INDUSTRY DEVELOPMENT AUTHORITY <small>38F DAKUPAN ROAD, DEPARTMENT OF AGRICULTURE ELIPTICAL ROAD, CALAMBA, QUEZON CITY</small>	OWNER	PROJECT TITLE	SHEET CONTENTS	DRAWN & DESIGNED BY:	CHECKED BY:	RECOMMENDING APPROVAL:	APPROVED:	SHEET NO.
		DESIGN AND DEVELOPMENT OF JUTE DECORTICATING MACHINE	EXTRACTION DRUMS ASSY.	PERITO M. SORIANO III <small>AGRICULTURAL AND MECHANICAL ENGINEER</small>	RAMIL B. BARCELONA <small>ENGINEER III</small>	REMEDIOS YARBON <small>CHIEF, FERTILIZATION AND TECHNICAL DIVISION</small>	REYNOLD G. COSTALES <small>SACCHING DIRECTOR II</small>	9
				<small>PRICE: 6000000 DATE: 07/12/2022</small>				22



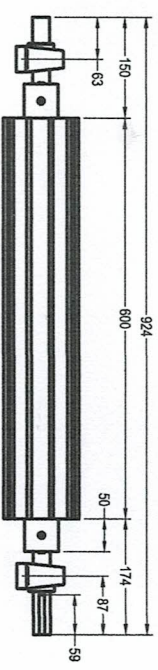
BREAKER ROLLER DETAILS



UPPER BREAKER DRUM



SECTION L-L SCALE (1:5)

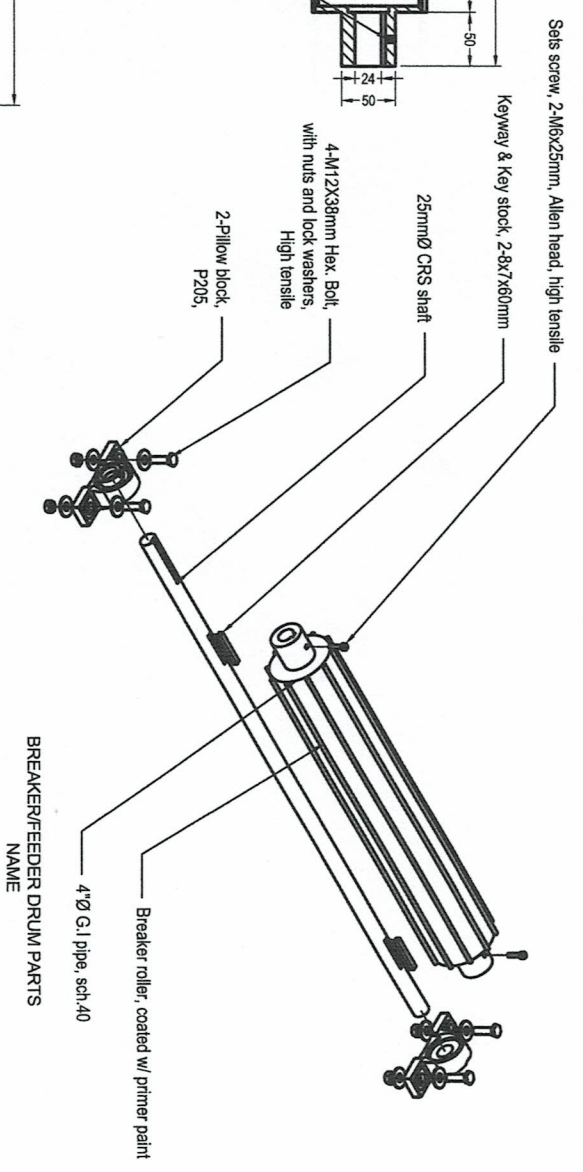


FEEDER DRUM

- GENERAL NOTES:**
1. Full weld all joints;
 2. The rotating drum must be dynamically balance to avoid high vibration;
 3. All dimension are in millimeters, unless otherwise specified;
 4. Subject to actual verifications;

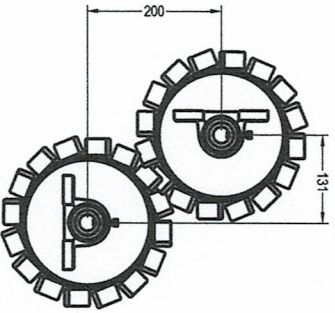
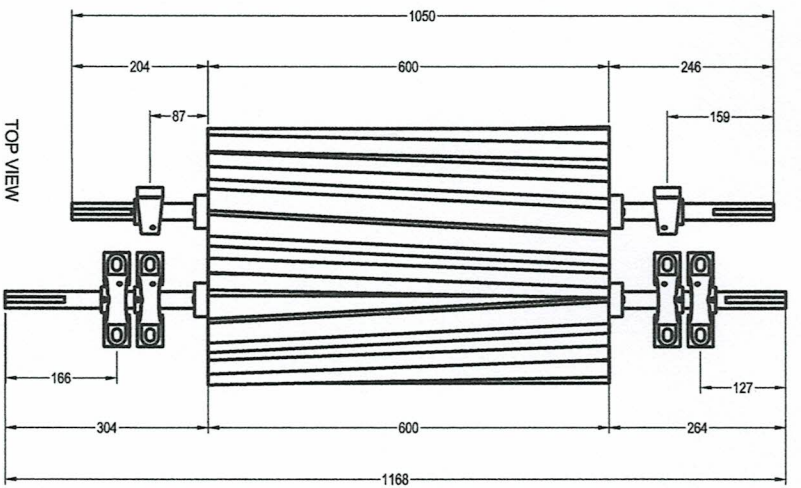
LOWER BREAKER DRUM

1/10 SCALE BREAKER DRUM ASSY. DETAILS 1:5MM

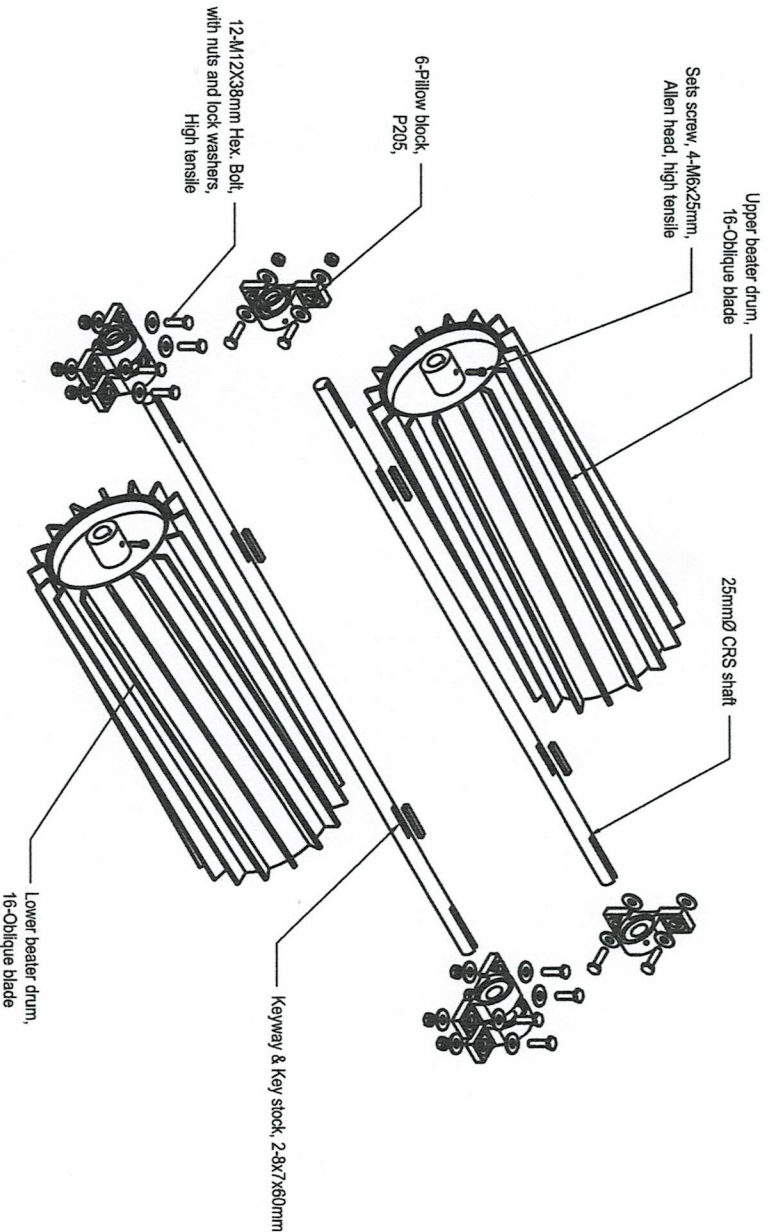


BREAKER/FEEDER DRUM PARTS NAME

<p>PHILIPPINE FIBER INDUSTRY DEVELOPMENT AUTHORITY 3RD DAKAAN BLDG., DEPARTMENT OF AGRICULTURE ELLIPTICAL ROAD, DILIMAN, QUEZON CITY</p>	PROJECT TITLE	SHEET CONTENTS		DRAWN & DESIGNED BY:	CHECKED BY:	RECOMMENDING APPROVAL	APPROVED	SHEET NO.
	DESIGN AND DEVELOPMENT OF JUTE DECORTICATING MACHINE	BREAKER AND FEEDER DRUM DETAILS		PERPETA N. AGRIANO III AGRICULTURAL AND MECHANICAL ENGINEER III PRNG: 0008984 PRTE DATE: 02/18/2022	RANIL B. BARCELONA ENGINEER III	REMEDIOS V. BARCELONA, PhD CHIEF, FIBER UTILIZATION AND TECHNOLOGY DIVISION	KENNEDY B. STALES EXECUTIVE DIRECTOR III	10 22

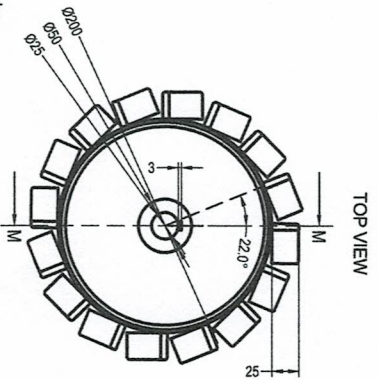
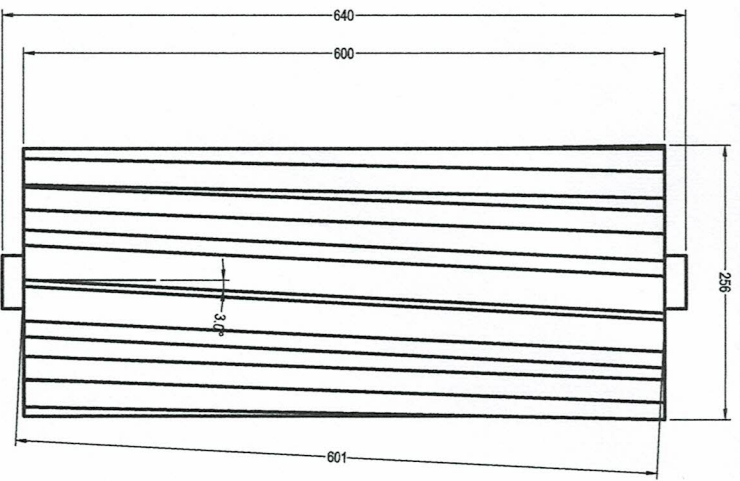


- GENERAL NOTES:**
1. Full weld all joints;
 2. The rotating drum must be dynamically balance to avoid high vibration;
 3. All dimension are in millimeters, unless otherwise specified;
 4. Subject to actual verifications;

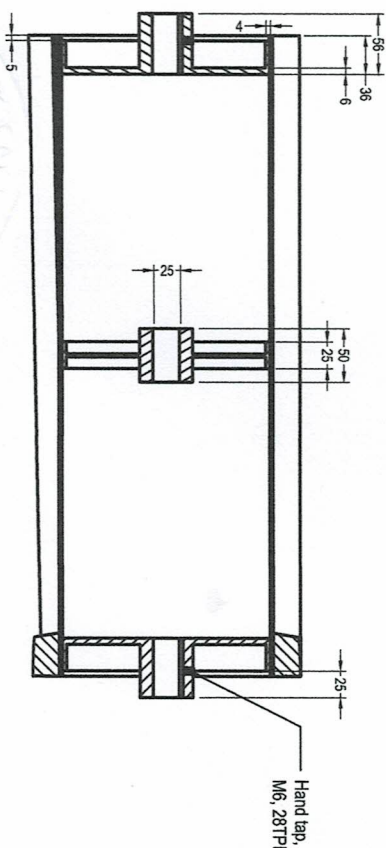
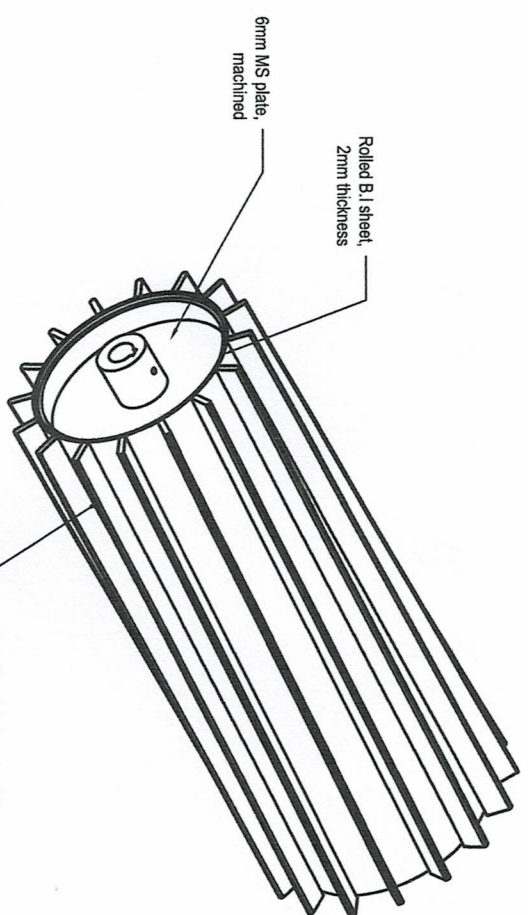


BEATER DRUM ASSY. PARTS NAME

1 BEATER DRUM DETAILS
SCALE 1:8MM



- GENERAL NOTES:**
1. Full weld all joints.
 2. The rotating drum must be dynamically balance to avoid high vibration.
 3. All dimension are in millimeters, unless otherwise specified.
 4. Subject to actual verifications.



1
12
SCALE

BEATER DRUM DETAILS 2
1:8MM

OWNER

PHILIPPINE FIBER INDUSTRY DEVELOPMENT AUTHORITY
3/F DARAPAC BLDG., DEPARTMENT OF AGRICULTURE
ELIPTICAL ROAD, DULAMAN, QUEZON CITY

PROJECT TITLE

DESIGN AND DEVELOPMENT OF JUTE DECORICATING MACHINE

SHEET CONTENTS

BEATER DRUM DETAILS	1
---------------------	---

DRAWN & DESIGNED BY:

PERITO, M. SORIANO, M.
ARCHITECTURAL AND MECHANICAL ENGINEER

CHECKED BY:

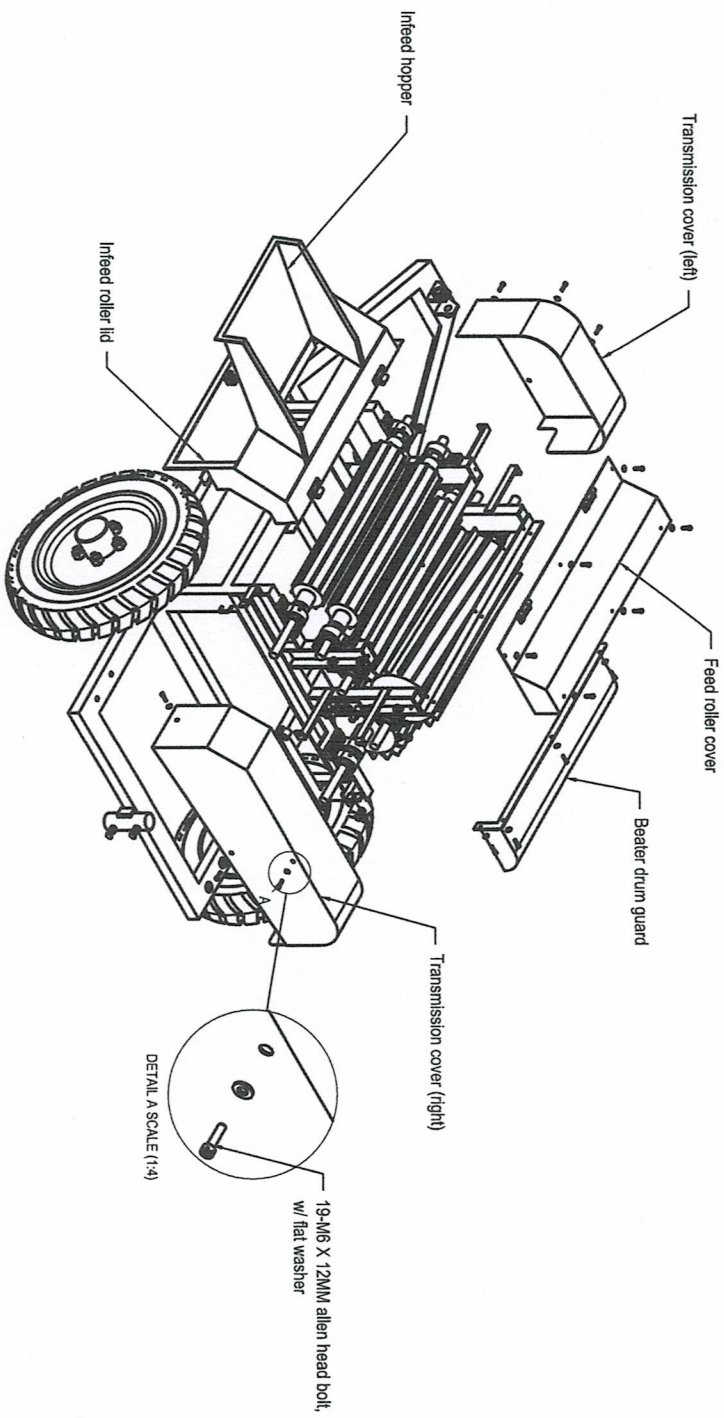
RAMIL B. BARCELONA
ENGINEER III

RECOMMENDING APPROVAL:

REMEDIOS, A.
CHIEF, FIBER UTILIZATION AND TECHNOLOGY DIVISION

APPROVED:

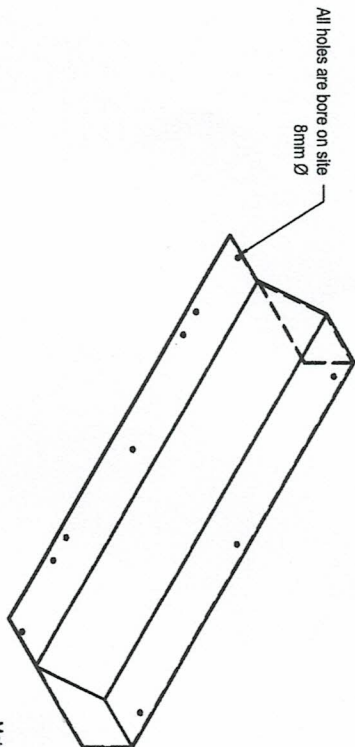
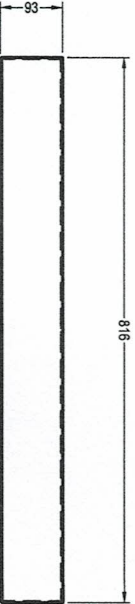
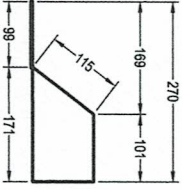
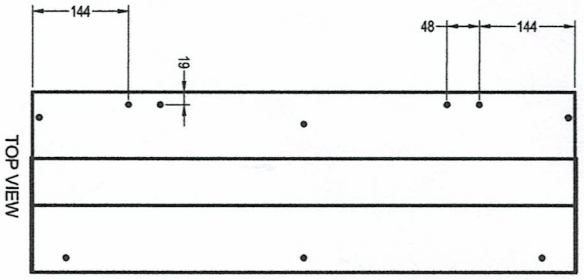
KEVINEDY ROSTALES
EXECUTIVE DIRECTOR III



1 MACHINE COVERS PARTS NAME
 12 SCALE 1:20MM

- GENERAL NOTES:
1. Full weld all joints;
 2. All dimension are in millimeters, unless otherwise specified;
 3. Subject to actual verifications;


<p>OWNER PHILIPPINE FIBER INDUSTRY DEVELOPMENT AUTHORITY 3RD DECADE BLDG., DEPARTMENT OF AGRICULTURE ELATI, TAGAYtay, MANILA, PHILIPPINES 1000</p>	<p>PROJECT TITLE DESIGN AND DEVELOPMENT OF JUTE DECORTICATING MACHINE</p>	<p>SHEET CONTENTS MACHINE COVERS ASSY</p>	<p>DRAWN & DESIGNED BY: PERITO M. SORIANO II JUNIOR ENGINEER DATE: 07/13/2022</p>	<p>CHECKED BY: RAMIL B. BARCELONA ENGINEER III</p>	<p>RECOMMENDING APPROVAL: REMEDIOS ABSONO CHIEF, RESEARCH AND TECHNOLOGY DIVISION</p>	<p>APPROVED KENEDY CASTALES ASSISTANT DIRECTOR III</p>
--	---	--	---	---	--	---

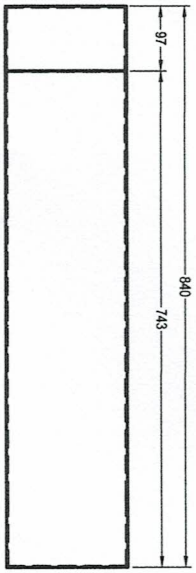


Materials:
 Black iron sheet, gauge 19, clean finished,
 coated with glossy enamel paint
 Green color.

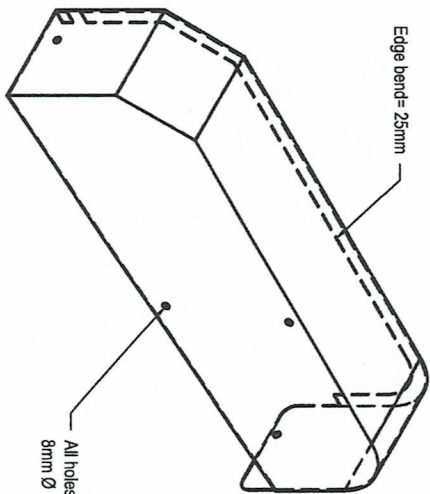
1
 18
 SCALE 1:8MM

- GENERAL NOTES:
1. Full weld all joints;
 2. All dimension are in millimeters, unless otherwise specified;
 3. Subject to actual verifications;

 PHILIPPINE FIBER INDUSTRY DEVELOPMENT AUTHORITY <small>3F DAKPOK BLDG., DEPARTMENT OF AGRICULTURE ELIPKOP, ROAD, DILIMAN, QUEZON CITY</small>	OWNER	DESIGN AND DEVELOPMENT OF JUTE DECORTICATING MACHINE	PROJECT TITLE	DRAWN & DESIGNED BY: PERRY M. SORIANO JR. <small>AGRICULTURAL AND MECHANICAL ENGINEER III</small>	CHECKED BY: RAMIL B. BARCELONA <small>ENGINEER III</small>	RECOMMENDING APPROVAL: REMEDIOS V. BARRON <small>PHD CHIEF, FIBER/TEXTILE/VALUE-ADDED TECHNOLOGY DIVISION</small>	APPROVED: KENEDY T. ROSALES <small>EXECUTIVE DIRECTOR III</small>	SHEET NO. 16 22
	SHEET CONTENTS							

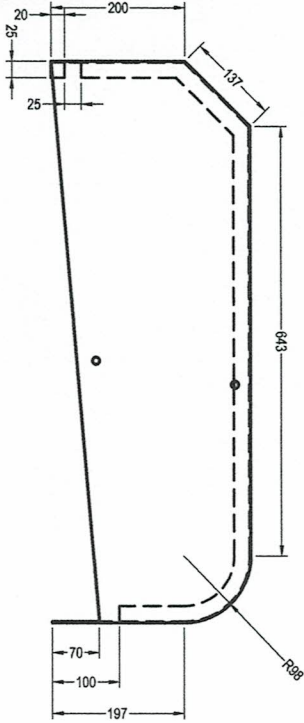


TOP VIEW

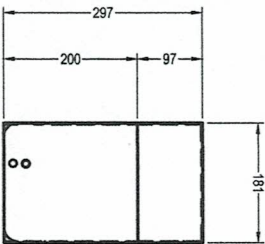


ISOMETRIC VIEW

Materials:
Black iron sheet, gauge 19, clean finished,
coated with glossy enamel paint
Green color.



FRONT VIEW

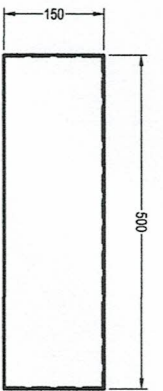


SIDE VIEW

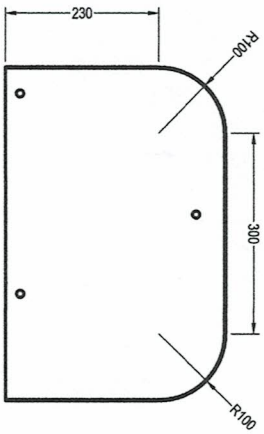
TRANSMISSION COVER (RIGHT) DETAILS
SCALE 1:38MM

- GENERAL NOTES:
1. Full weld all joints;
 2. All dimension are in millimeters, unless otherwise specified;
 3. Subject to actual verifications;

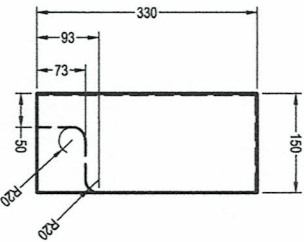
 PHILIPPINE FIBER INDUSTRY DEVELOPMENT AUTHORITY <small>36 DAKOP BLDG. DEPARTMENT OF AGRICULTURE ELIPICAL ROAD, DILIMAN, QUEZON CITY</small>	OWNER	DESIGN AND DEVELOPMENT OF JUTE DECORTICATING MACHINE	PROJECT TITLE	DRAWN & DESIGNED BY: PERITO M. SORIANO JR. <small>AGRICULTURAL AND INDUSTRIAL ENGINEER III</small>	CHECKED BY:	RECOMMENDING APPROVAL: REMYEDIOS V. BARBON <small>CHIEF, FIBER UTILIZATION AND TECHNICAL DIVISION</small>	APPROVED:
	AS SHOWN ALL DIMENSIONS IN MILLIMETERS DATE: 07/19/2022		PAUL B. BARCELONA <small>ENGINEER III</small>		KENNEDY B. WALKES <small>ENGINEER III</small>		
17 22	SHEET NO.						



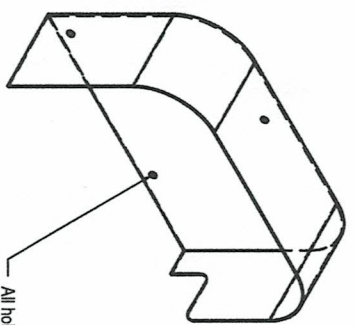
TOP VIEW



FRONT VIEW



FRONT VIEW

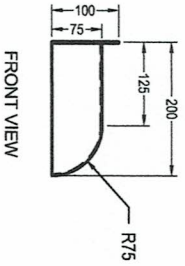


ISOMETRIC VIEW

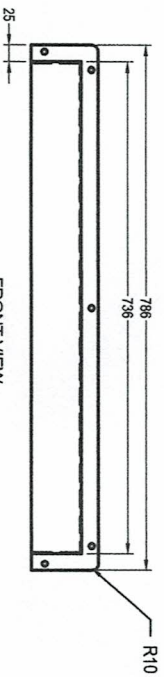
Materials:
Black Iron sheet, gauge 19, clean finished,
coated with glossy enamel paint,
Green color,

All holes are bore on side
8mm Ø

1 TRANSMISSION COVER (LEFT) DETAILS
SCALE 1:3MM

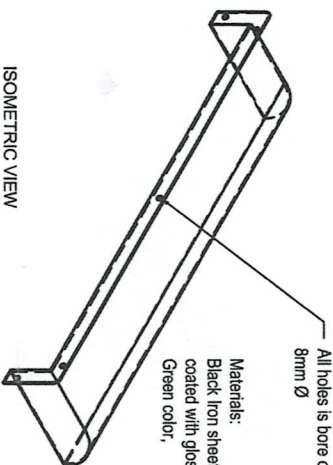


FRONT VIEW



FRONT VIEW

2 BEATER DRUM GUARD DETAILS
SCALE 1:3MM



ISOMETRIC VIEW

Materials:
Black Iron sheet, gauge 19, clean finished,
coated with glossy enamel paint,
Green color,

All holes is bore on side
8mm Ø

- GENERAL NOTES:
1. Full weld all joints;
 2. All dimension are in millimeters, unless otherwise specified;
 3. Subject to actual verifications;



PHILIPPINE FIBER INDUSTRY
DEVELOPMENT AUTHORITY
38 DAVAO BLVD., DEPARTMENT OF AGRICULTURE
ELIZABETH ROAD, DILIMAN, QUEZON CITY

PROJECT TITLE
DESIGN AND DEVELOPMENT OF
JUTE DECORTICATING MACHINE

SHEET CONTENTS	
AS SHOWN	PERIOT, SOBRANO JR.
	ARCHITECTURE AND INDUSTRIAL ENGINEERING
	PINC. 0098964
	ENGINEER
	DATE: 02/19/2022

DRAWN & DESIGNED BY:

CHECKED BY:

RECOMMENDING APPROVAL

APPROVED

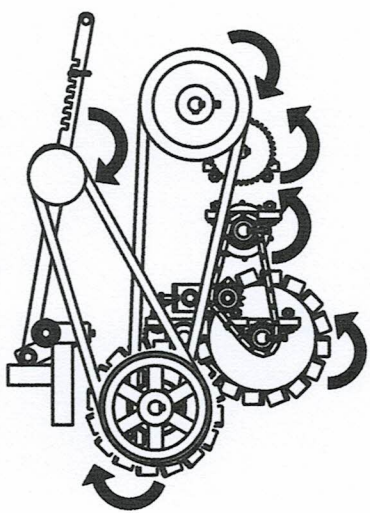
RAMIL B. BARCELONA
ENGINEER III

REMEDIOS
CHIEF, FABRICATION AND TECHNICAL DIVISION

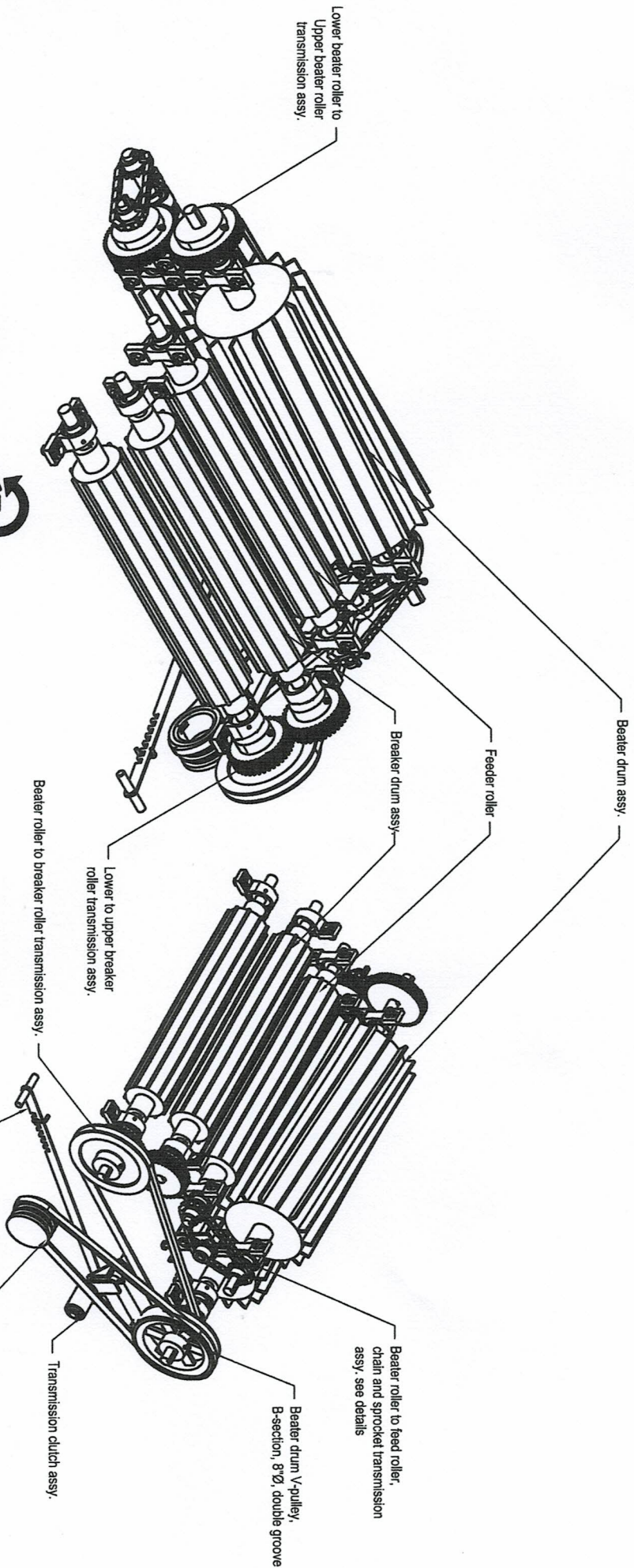
KENNEDY
ENGINEER III

SHEET NO.
18
22

- GENERAL NOTES:**
1. Full weld all joints;
 2. The rotating drum must be dynamically balance to avoid high vibration;
 3. All dimension are in millimeters, unless otherwise specified;
 4. Subject to actual verification;

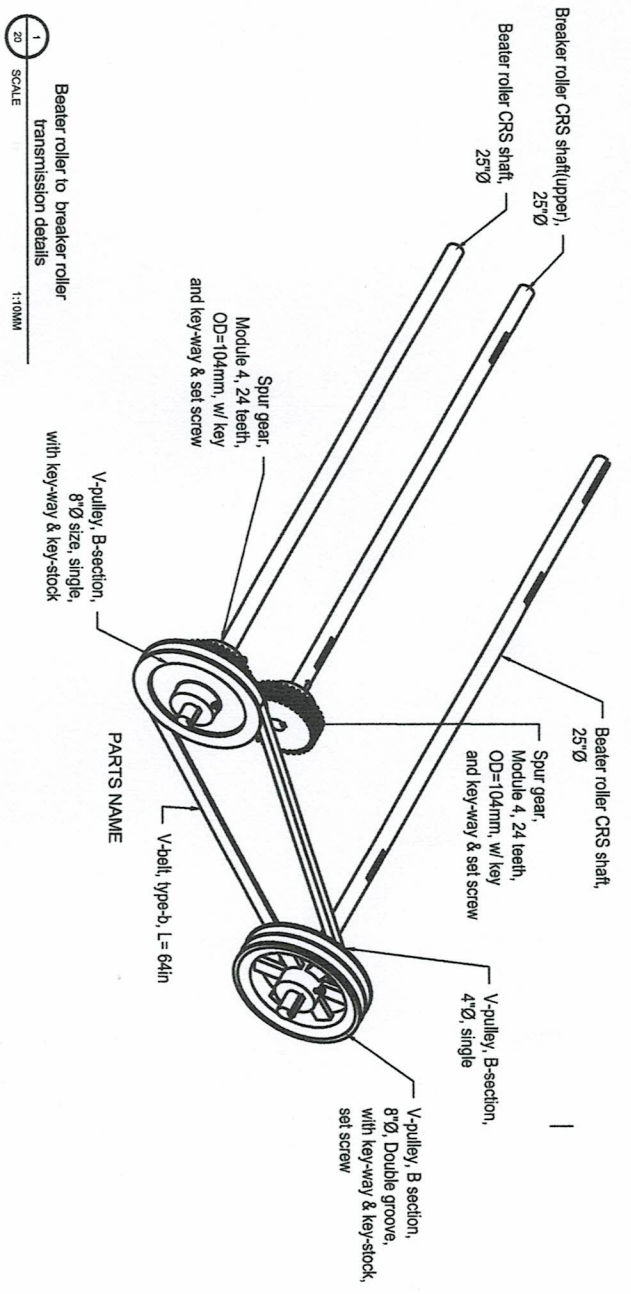
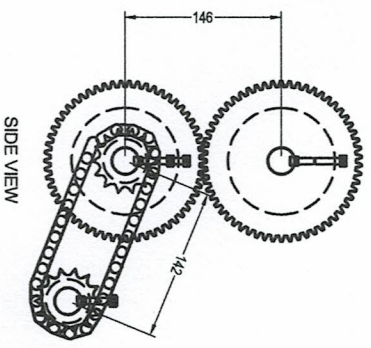
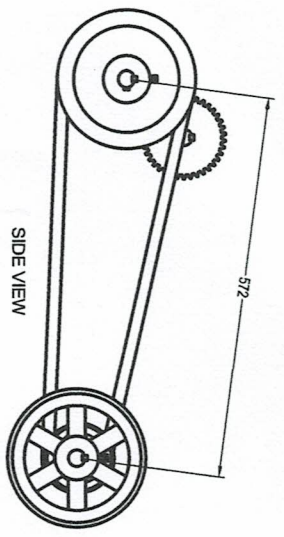


DIRECTION OF ROTATIONS



1 TRANSMISSION ASSY. PARTS NAME
SCALE 1:10MM

OWNER PHILIPPINE FIBER INDUSTRY DEVELOPMENT AUTHORITY 387 PARKER BLDG. DEPARTMENT OF AGRICULTURE ELIPTICAL ROAD QUEZON CITY	PROJECT TITLE	DESIGN AND DEVELOPMENT OF JUTE DECORTICATING MACHINE	
	SHEET CONTENTS	SECTION	
DRAWN & DESIGNED BY REYNOLD GONZALEZ AGRICULTURAL ENGINEER III DATE: 07/15/2022	CHECKED BY RAMIL B. BANCETOVA ENGINEER III	PREC. 000984	DATE: 07/15/2022
		RECOMMENDING APPROVAL REMEDIOS V. BONGMA PHD CHIEF, FIBER UTILIZATION AND TECHNOLOGY DIVISION	APPROVED KENNETH T. BONGMA ENGINEERING DIRECTOR III
		19	22

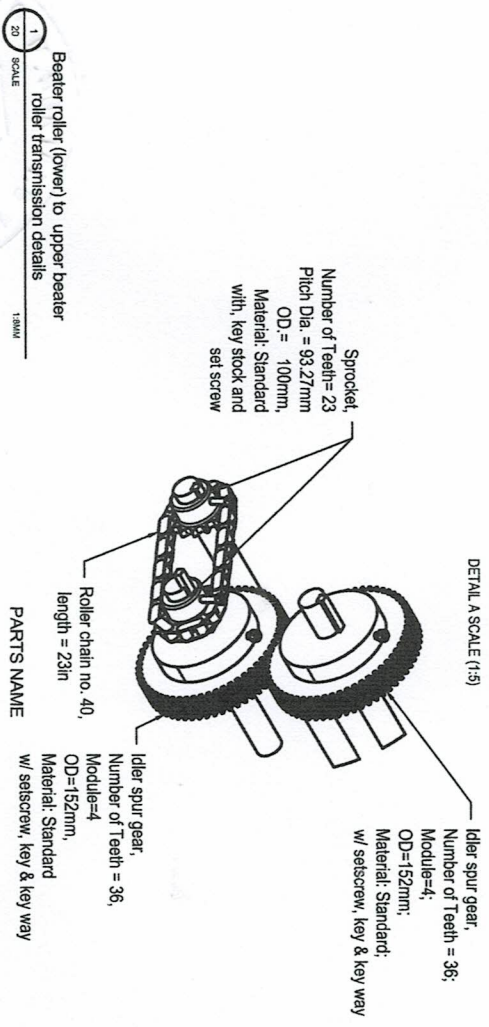


1
20 SCALE

Beater roller to breaker roller transmission details

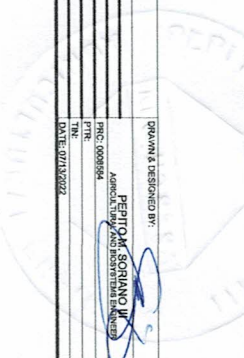
1:10MM

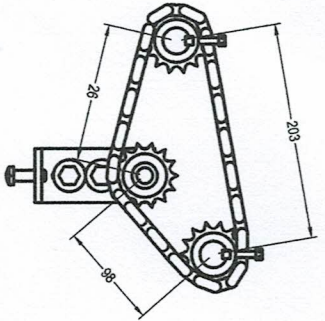
DETAIL A SCALE (1:5)



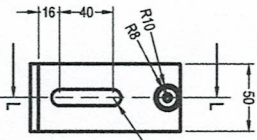
- GENERAL NOTES:
1. Full weld all joints;
 2. The rotating drum must be dynamically balance to avoid high vibration;
 3. All dimension are in millimeters, unless otherwise specified;
 4. Subject to actual verification;

OWNER	PHILIPPINE FIBER INDUSTRY DEVELOPMENT AUTHORITY 38F DARAPAC BLDG. DEPARTMENT OF AGRICULTURE ELIPYAL ROAD, QUEZON CITY
PROJECT TITLE	DESIGN AND DEVELOPMENT OF JUTE DECORTICATING MACHINE
SHEET CONTENTS	AS SHOWN
DRAWN & DESIGNED BY:	DEPTORAC SOGIANO JR. AGRICULTURAL ENGINEER III
CHECKED BY:	RAMIL B. BARCELONA ENGINEER III
RECOMMENDING APPROVAL:	REMEDIOS ABGON PIND CHIEF, FIBER UTILIZATION AND RESEARCH DIVISION
APPROVED:	KENNEDY T. ZOSIJALES PRESIDENT, DIRECTOR III
SHEET NO.	20



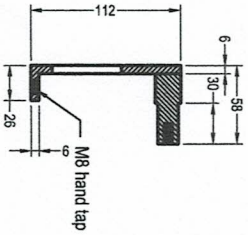


SIDE VIEW



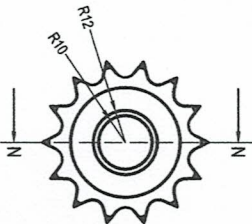
TENSIONER BODY

SECTION L-L SCALE (1:4)



TENSIONER SPROCKET

SECTION M-M SCALE (1:2)



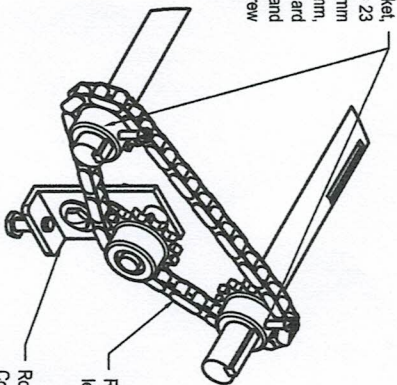
TENSIONER DETAILS

SCALE 21 NTS

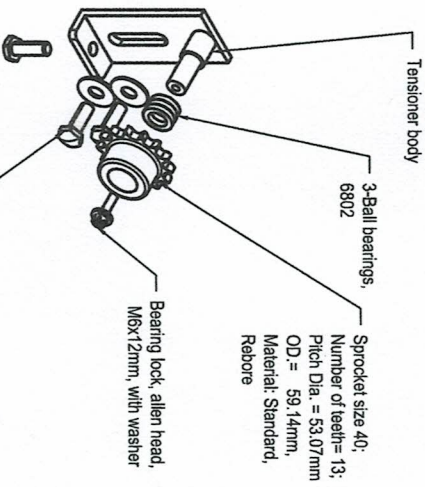
BEATER ROLLER (lower) TO UPPER BEATER ROLLER TRANSMISSION DETAILS

SCALE 21 1:2MM

Sprocket,
Number of Teeth= 23
Pitch Dia. = 93.27mm
OD = 100mm,
Material: Standard
with, key stock and
set screw



DETAIL B SCALE (1:4)



PARTS NAME

- GENERAL NOTES:
1. Full weld all joints;
 2. The rotating drum must be dynamically balance to avoid high vibration;
 3. All dimension are in millimeters, unless otherwise specified;
 4. Subject to actual verification;

OWNER
PHILIPPINE FIBER INDUSTRY DEVELOPMENT AUTHORITY
3RD DARAFAR ROAD, DEPARTMENT OF AGRICULTURE
ELIPTICAL ROAD, DUKUWAL, QUEZON CITY

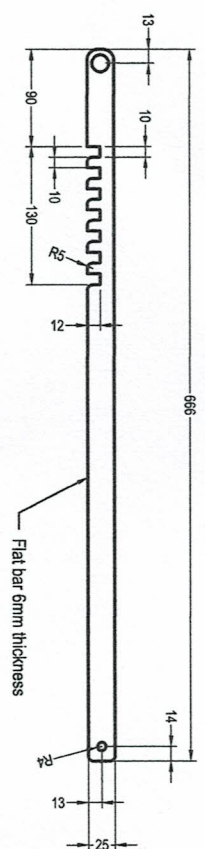
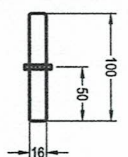
PROJECT TITLE
DESIGN AND DEVELOPMENT OF JUTE DECORICATING MACHINE

SHEET CONTENTS	
AS SHOWN	DRAWN & DESIGNED BY: PERITO, SOBRANO JR. AGRICULTURAL AND INDUSTRIAL ENGINEER
	PROJ. 0000044
	DATE 07/13/2022

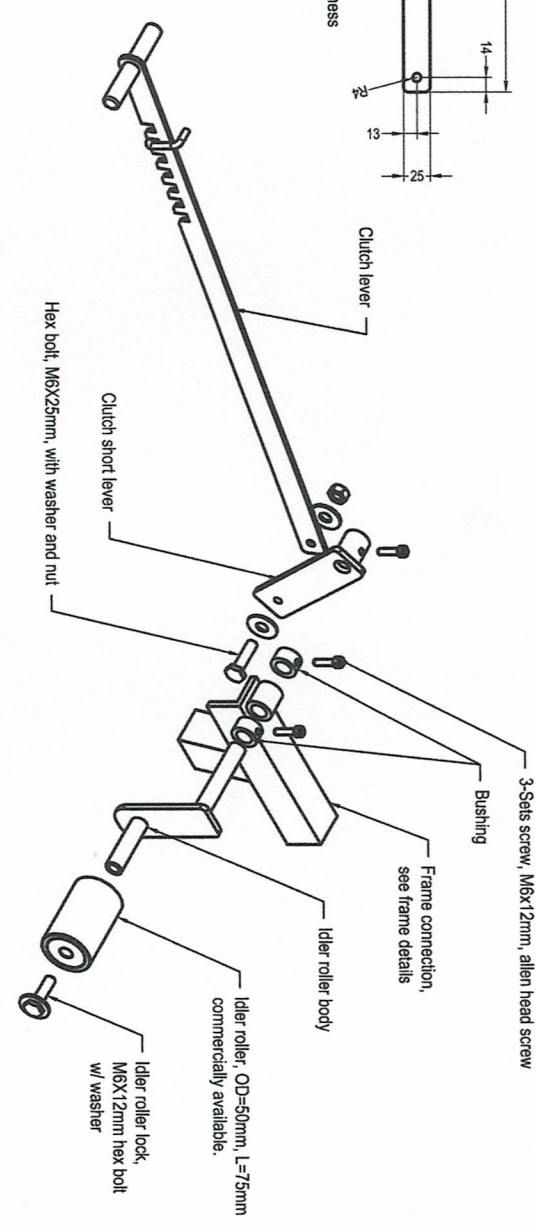
CHECKED BY: RAMIL B. BARCELONA ENGINEER III

RECOMMENDING APPROVAL: REMEDIOS, ABONIA, PHD CHIEF, RESEARCH AND TECHNOLOGY DIVISION

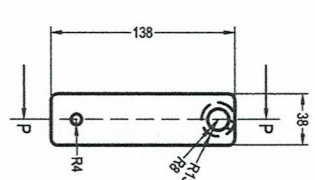
APPROVED: KEMERBA, ROSALES EXECUTIVE DIRECTOR III



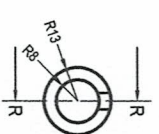
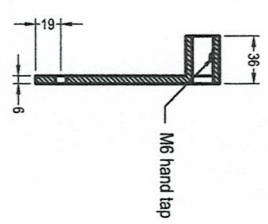
1 CLUTCH LEVER DETAILS
SCALE: 1:1
NTS



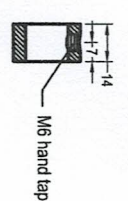
2 TRANSMISSION CLUTCH
PARTS NAME
SCALE: 1:50mm
NTS



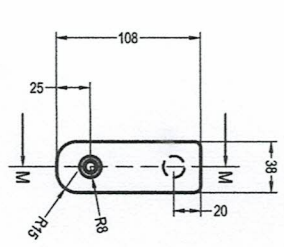
SECTION P-P SCALE (1:4)
SCALE: 1:4
NTS



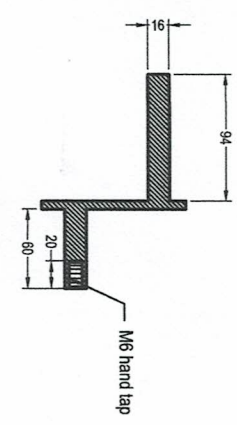
SECTION R-R SCALE (1:2)
SCALE: 1:2
NTS



4 BUSHING DETAILS
SCALE: 1:2
NTS



SECTION M-M SCALE (1:4)
SCALE: 1:4
NTS



5 IDLER ROLLER
BODY DETAILS
SCALE: 1:4
NTS

- GENERAL NOTES:**
1. Full weld all joints;
 2. The rotating drum must be dynamically balance to avoid high vibration;
 3. All dimension are in millimeters, unless otherwise specified;
 4. Subject to actual verification;

<p>PHILIPPINE FIBER INDUSTRY DEVELOPMENT AUTHORITY 36F DAKPOK ROAD, DEPARTMENT OF AGRICULTURE ELIPTON, ROAD, DILIMAN, QUEZON CITY</p>	PROJECT TITLE	DESIGN AND DEVELOPMENT OF JUTE DECORTICATING MACHINE
	OWNER	PHILIPPINE FIBER INDUSTRY DEVELOPMENT AUTHORITY 36F DAKPOK ROAD, DEPARTMENT OF AGRICULTURE ELIPTON, ROAD, DILIMAN, QUEZON CITY
<p>PETA</p>	DRAWN & DESIGNED BY:	AS SHOWN
		<p>FENTON SORIANO III AGRICULTURAL AND INDUSTRIAL ENGINEER</p>
<p>PETA</p>	CHECKED BY:	DATE: 07/17/2022
		<p>RAMIL B. BARCELONA ENGINEER III</p>
<p>PETA</p>	RECOMMENDING APPROVAL:	RECOMMENDING APPROVAL
		<p>REMILOS V. BONGON, PhD CHIEF, FIBER TECHNOLOGY AND TECHNICAL DIVISION</p>
<p>PETA</p>	APPROVED:	APPROVED
		<p>KEVIN X. COSTALES REGIONAL DIRECTOR III</p>
<p>PETA</p>	SHEET NO.	22
<p>PETA</p>		22