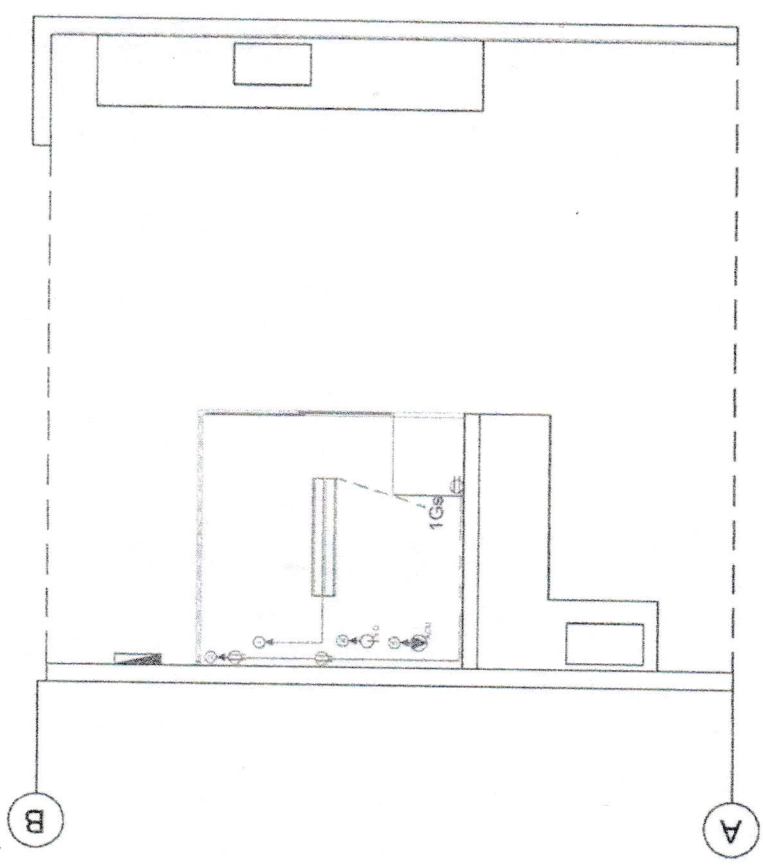



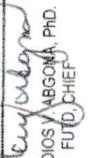



TOP VIEW



ELECTRICAL LAY OUT

OWNER	PROJECT TITLE/LOCATION	SHEET CONTENT	DRAWN BY:	CHECKED BY:	RECOMMENDING APPROVAL	APPROVED	SHEET NO
 PHILIPPINE FIBER INDUSTRY DEVELOPMENT AUTHORITY (PHIFIDA)	REFURBISHMENT OF DYNAMIC SPINNING MACHINE ROOM BAI COMPOUND, VIS AVE, MARIKINA CITY	AS SHOWN	 PEPIITO M. SISON ENGINEER II	 RAMIL B. BARCELONA ENGINEER III	 REMEDIOS V. ABCON, PH.D. FUND. CHIEF	 KENNEY J. CASTALES EXECUTIVE DIRECTOR III	1

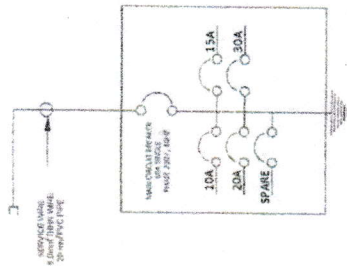
CKT. NO.	LOADS	QTY.	VOLT AMPERE	VOLT	AMPERE RATING	CIRCUIT BREAKER RATING	WIRE AND CONDUIT
1	FLOURESCENT	2	100VA	230	0.869A	10A	USE 2.0mm ² THHN WIRE AND 15mm ² PVC PIPE
2	CONVENIENCE OUTLET	3	180VA	230	2.348A	15A	USE 3.5mm ² THHN WIRE AND 15 mm ² PVC PIPE
3	1 HP SPLIT TYPE ACU	1	1840VA	230	8A	20A	USE 3.5mm ² THHN WIRE AND 15 mm ² PVC PIPE
4	SPINNER-OUTLET	1	3000VA	230	13.04A	30A	USE 5.5mm ² THHN WIRE AND 15 mm ² PVC PIPE

SCHEDULE OF LOADS

FEEDER CALCULATION

LIGHTING AND POWER CALCULATION
 LIGHTING FLUORESCENT (2 X 100VA) = 200VA
 POWER: FLUORESCENT (2 X 100VA) = 200VA
 CONVENIENCE OUTLET (3 X 180VA) = 540VA
 SPINNER OUTLET (1 X 3000VA) = 3000VA
 ACU (1 X 1840VA) = 1840VA

TOTAL = 5580VA
 MAIN BREAKER (200VA-540VA-1840VA-(2000@250%)) / 230= 43.82A
 USE 60 AMP SINGLE PHASE, 230V, 60 HZ MOLDED CASE CKT. BREAKER
 SERVICE CONDUCTOR (180VA-(6000@25%)) / 230 = 38.739A
 USE 8 0 mm THHN WIRE AND 20mm² PVC PIPE

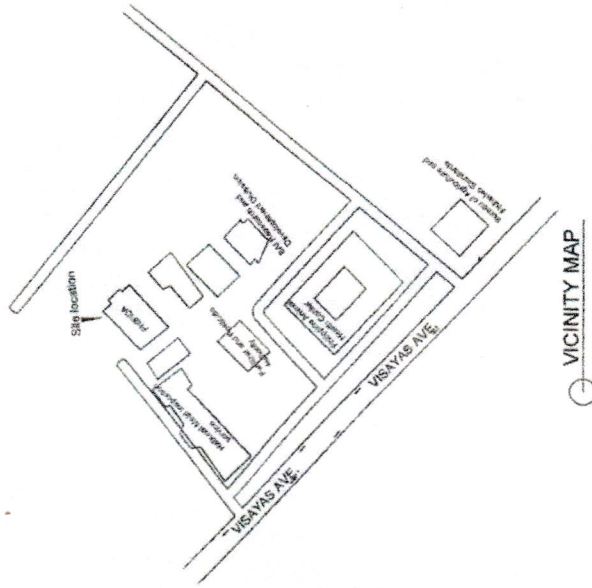


LEGEND

[Symbol]	FLOURESCENT
[Symbol]	PANEL BOARD
[Symbol]	CKT. HOMERUN
[Symbol]	SPLIT TYPE ACU
[Symbol]	SPINNER OUTLET
[Symbol]	1 GANG SWITCH
[Symbol]	WIRE CONNECTION
[Symbol]	LOAD CONNECTION

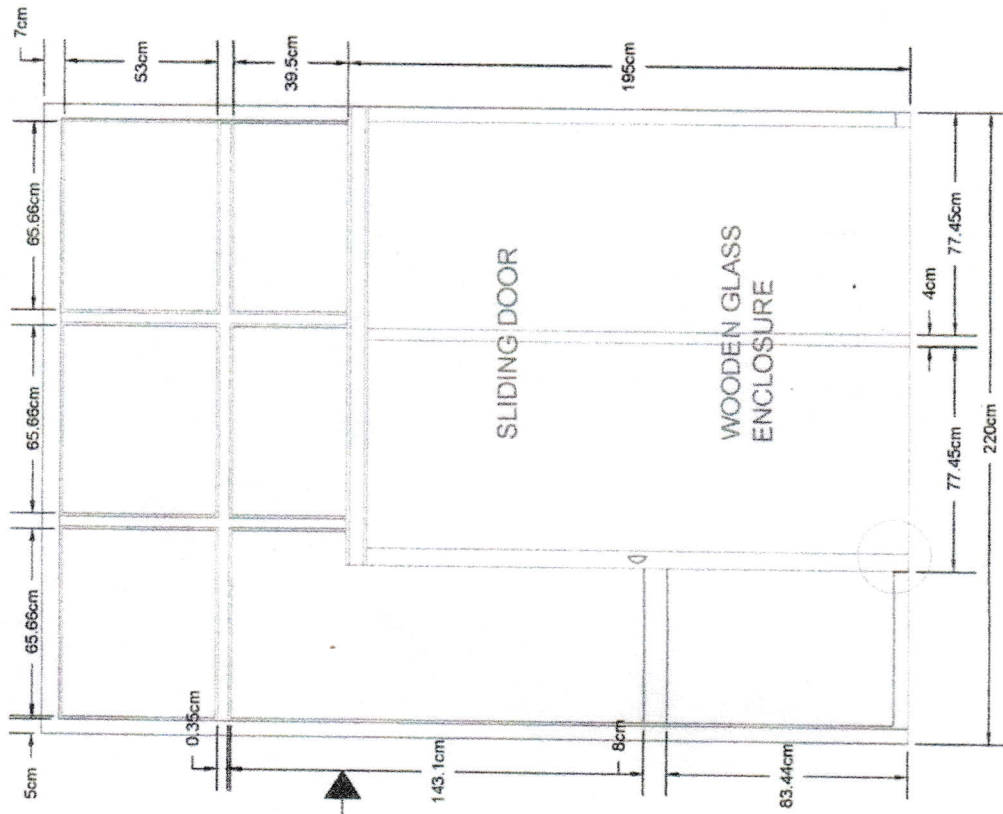
NOTES AND SPECIFICATION

- ALL ELECTRICAL WORKS SHALL BE DONE IN ACCORDANCE WITH THE NATIONAL BUILDING CODE, PROVISION OF LATEST ELECTRICAL CODE
- CONTRACTOR SHALL CONDUCT GROUND TEST, WIRE IDENTIFICATION AND LOAD TEST UPON COMPLETION OF WORKS
- CONTRACTOR SHALL BE RESPONSIBLE IN THE PREPARATION OF AS BUILT PLAN
- CONTRACTOR SHALL LOCATE ALL SPLICING BOXES TO ACCESSIBLE PLACE OR WITH ACCESS PANELS.
- ALL WORKS SHALL BE DONE UNDER THE DIRECT SUPERVISION AND CLOSELY ELECTRICAL ENGINEER OR REGISTERED ELECTRICAL ENGINEER.
- ALL MATERIALS TO BE USED SHALL BE NEW AND APPROVED TYPE PURPOSE AND LOCATION
- ALL WIRE SHOULD HAVE A MAXIMUM LOAD OF 80 OF WIRE AMPACITY.
- CONDUIT EMBEDDED WITHIN CONCRETE SHALL HAVE A MINIMUM CEMENT PLASTERED OF 20mm THICK.
- VOLTAGE DROP SHALL BE LIMITED TO 2.5 FROM THE SUPPLY TO THE LOADS AND TO THE EQUIPMENT OR ACCEPTABLE TO THE LABORATORY EQUIPMENT.

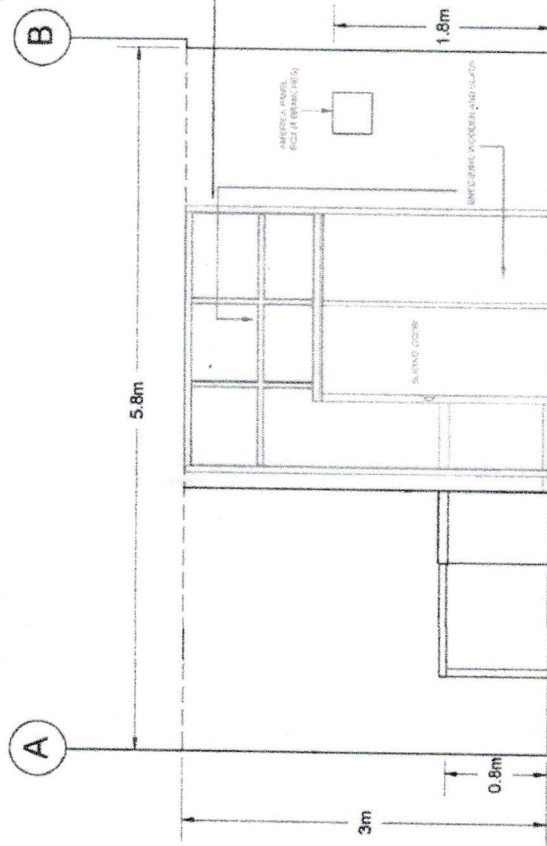


VICINITY MAP






OWNER PHILIPPINE FIBER INDUSTRY DEVELOPMENT AUTHORITY (PHIFIDA)	PROJECT TITLE/LOCATION Retubishment of Dynamic Spinning Machine Room 8A1 Compound, Vis. Ave. Vista, Quezon City	SHEET CONTENT AS SHOWN	DRAWN BY PEPITO M. SOYRANON ENGINEER	CHECKED BY RAMIL B. BARCELONA ENGINEER III	RECOMMENDING APPROVAL REMNEDIOS V. ARGONA, PH.D. FUTD, CHIEF	APPROVED KENNEDY BOGHALES EXECUTIVE DIRECTOR III	SHEET NO. 2
--	---	---------------------------	--	--	--	--	----------------



○ IN LARGE ENCLOSURE



○ FRONT VIEW

OWNER	PROJECT TITLE/LOCATION	SHEET CONTENT	DRAWN BY:	CHECKED BY:	RECOMMENDING APPROVAL	APPROVED	SHEET NO
 PHILIPPINE FIBER INDUSTRY DEVELOPMENT AUTHORITY (PIFIDA)	Refurbishment of Dynamic Spinning Machine Room BAI Compound, Via. Ave., Vajra, Quizon City	AS SHOWN	 PEPTO A. SORIANO III ENGINEER II	 RAMIL B. BARCELONA ENGINEER III	 REMEDIOS M. ARGONA, PH.D. FUPD CHIEF	 KENEDY P. BOSTALES EXECUTIVE DIRECTOR III	3