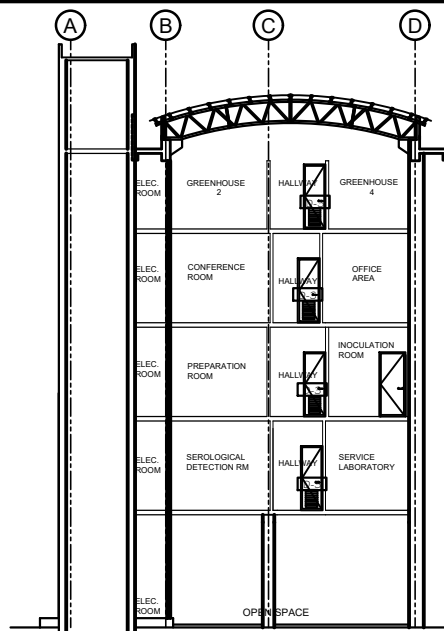
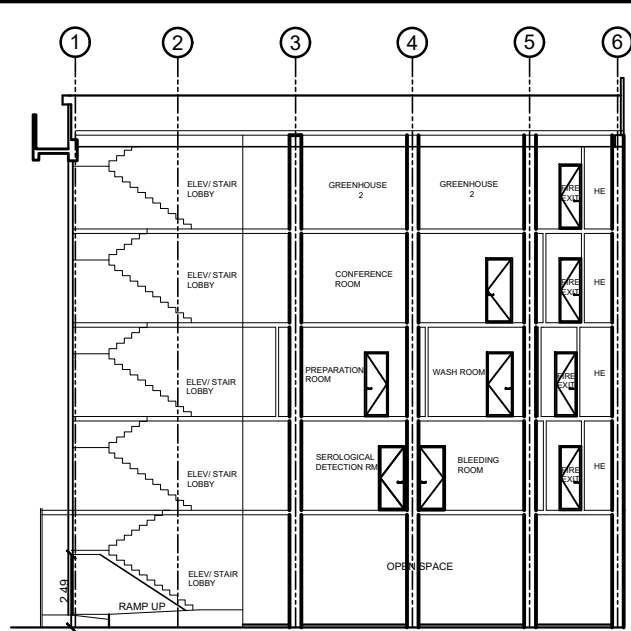


4 RIGHT-SIDE ELEVATION  
SCALE 1:100 M



5 CROSS SECTION  
SCALE 1:100 M



6 LONGITUDINAL SECTION  
SCALE 1:100 M

FINISH FLOOR LINE	DESIGNATION	DESCRIPTION	LOCATION	QUANTITY
1	D-1	20MM THK CLEAR TEMPERED GLASS ALUMINUM FRAMED DOUBLE SWING DOOR ON POWDER COATED WHITE FINISH WITH FIXED WINDOW	MAIN ENTRY	1 - SET
2	D-2	ALUMINUM FRAMED GLASS DOOR	BIOTECH LABORATORY: ISOLATION ROOM, CULTURE ROOM, ADMINISTRATION, ANTE ROOM, BOARD ROOM, RECEPTION AREA, SEROLOGICAL DETECTION ROOM, PREPARATION ROOM, CONFERENCE ROOM	1 - SET
3	D-3	VARRA FLUSH DOOR, VARNISH FINISH	COURT ROOM, WASH ROOM, SERVICE LABORATORY, INOCULATION ROOM	1 - SET
4	D-4	METAL FLUSH DOOR, EPOXY PAINTED FINISH	FIRE EXIT, ELECTRICAL ROOM, GENERATOR SET, STORE ROOM	1 - SET
5	D-5	20MM THK CLEAR TEMPERED GLASS ALUMINUM FRAMED DOUBLE SWING DOOR ON POWDER COATED WHITE FINISH	ANTE AREA	1 - SET
6	D-6	20MM THK CLEAR TEMPERED GLASS ALUMINUM FRAMED DOUBLE SWING DOOR ON POWDER COATED WHITE FINISH	ANTE AREA	3 - SETS
7	D-7	20MM THK CLEAR TEMPERED GLASS ALUMINUM FRAMED SLIDING DOOR ON POWDER COATED WHITE FINISH	CONFERENCE ROOM	1 - SET
8	D-8	PVC VARIFOLD DOOR	CONFERENCE ROOM	1 - SET
9	D-9	G.I.P. FRAMED CYCLONE WIRE DOOR	GREENHOUSE SUPPLIES, GREENHOUSE 3, GREENHOUSE 4, GREENHOUSE 5	4 - SETS

FINISH FLOOR LINE	DESIGNATION	DESCRIPTION	LOCATION	QUANTITY
1	AW-1	6MM THK CLEAR GLASS ON ALUMINUM FRAME CASEMENT WINDOW ON POWDER COATED WHITE FINISH	ISOLATION ROOM, CULTURE ROOM, ADMINISTRATION, STORE ROOM	4 - SETS 21.24
2	AW-2	6MM THK CLEAR GLASS ON ALUMINUM FRAME CASEMENT WINDOW ON POWDER COATED WHITE FINISH	MOLECULAR ROOM, CULTURE ROOM, OFFICE AREA, GREENHOUSE 5	4 - SET 32.4
3	AW-3	6MM THK CLEAR GLASS ON ALUMINUM FRAME CASEMENT WINDOW ON POWDER COATED WHITE FINISH	SEROLOGICAL DETECTION ROOM, PREPARATION ROOM, CONFERENCE ROOM, GREENHOUSE 2, ELECTRICAL ROOM	9 - SETS 17.55
4	AW-4	6MM THK CLEAR GLASS ON ALUMINUM FRAME AWNING WINDOW ON POWDER COATED WHITE FINISH	ELEVATOR/STAIR LOBBY	5 - SETS 27.00
5	AW-5	6MM THK CLEAR GLASS ON ALUMINUM FRAME AWNING WINDOW ON POWDER COATED WHITE FINISH	STAIR GROUND FLOOR	1 - SET 1.70
6	AW-6	6MM THK CLEAR GLASS ON ALUMINUM FRAME CASEMENT WINDOW, POWDER COATED WHITE FINISH	MOLECULAR ROOM, SERVICE LABORATORY/PANTRY, INOCULATION ROOM, ANTE ROOM, CULTURE ROOM, OFFICE AREA, BLEEDING ROOM, WASH ROOM, CONFERENCE ROOM, GREENHOUSE 2	16 - SETS 104
7	AW-7	6MM THK CLEAR TEMPERED GLASS ON ALUMINUM FRAME FIXED WINDOW, POWDER COATED WHITE FINISH	RABBIT ROOM, SUPPLY CHEMICAL ROOM, LIBRARY	3 - SETS 14.05
8	AW-8	12MM THK CLEAR TEMPERED GLASS ON ALUMINUM FRAME FIXED WINDOW, POWDER COATED WHITE FINISH	SECOND FLOOR TO FIFTH FLOOR FACADE	1 - SET 40.75
9	AW-9	12MM THK CLEAR TEMPERED GLASS ON ALUMINUM FRAME FIXED WINDOW, POWDER COATED WHITE FINISH	SECOND FLOOR TO FIFTH FLOOR LEFT-SIDE STAIR WINDOW	1 - SET 13.95

3 SCHEDULE OF DOORS AND WINDOWS  
SCALE 1:100 M

**LIQUIGAN ARCHITECTS & CONSULTANCY**  
ARCHITECTS • ENGINEERS • CONSULTANTS  
79 AVOCADO ST. TANZA, TUGUEGARAO CITY, CAGAYAN 3500, PHIL. Tel. No.(078) 846-3158, Mobile - 0916-3883309



**PROPOSED 5-STOREY BIOTECH LABORATORY BUILDING**  
PHILIPPINE FIBER INDUSTRY DEVELOPMENT AUTHORITY, BAI COMPOUND, VISAYAS AVE. DILMAN, QUEZON CITY.  
DESIGNED BY: **HIPOLITO A. LIQUIGAN** (P.R.C. REG. NO. 11629/TIN 130.322.284)  
STRUCTURAL ENGINEER: **DIOSDADO B. DIMALANTA** (P.R.C. REG. NO. 42651/TIN 140.204.085)  
DATE: 1.2.14

RECOMMENDING APPROVAL:  
**JOSE L. CATALA** (OIC - RESEARCH DIVISION)  
**ENGR. PETRONILO B. JABAY** (OIC - DEPUTY EXECUTIVE DIRECTOR)  
APPROVED BY:  
**EDUARDO B. HOLYOHOY, CESO V** (OIC - EXECUTIVE DIRECTOR)  
SHEET CONTENT: AS SHOWN  
A-5